



## Walton Street, SW3

£625,000

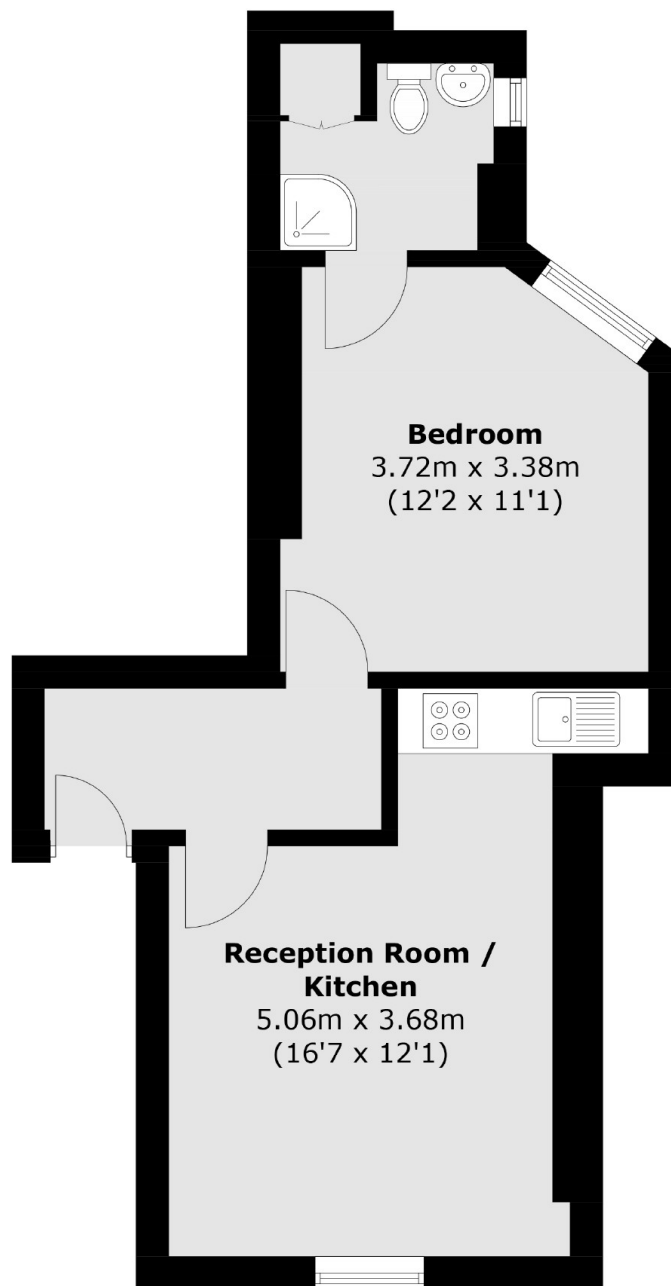
A one bedroom apartment filled with natural light located within a gated development. This property is in good condition and would be an ideal long term investment or London base.

The Marlborough is a sought after, gated development on the border of Chelsea and Knightsbridge, ideally located for all that the local area has to offer.

### Features

- Porter
- Gated Development
- One Bedroom
- Idea London Base
- Popular Location
- Good Condition

**Walton Street,  
London, SW3**



## **Fourth Floor**

Total area (approx.): 37.5 sq. m (403.6 sq. ft)

**Dexters**

Chelsea and Belgravia  
45 Sloane Avenue  
London  
SW3 3DH  
Sales  
020 7590 9510

Energy Rating: . We aim to make our particulars both accurate and reliable. However they are not guaranteed; nor do they form part of an offer or contract. If you require clarification on any points then please contact us, especially if you're traveling some distance to view. Please note that appliances and heating systems have not been tested and therefore no warranties can be given as to their good working order.

 **RICS** | Regulated  
Estate Agent  
and Letting Agent

[dexters.co.uk](https://www.dexters.co.uk)