



Halsey Street, SW3

£1,500,000

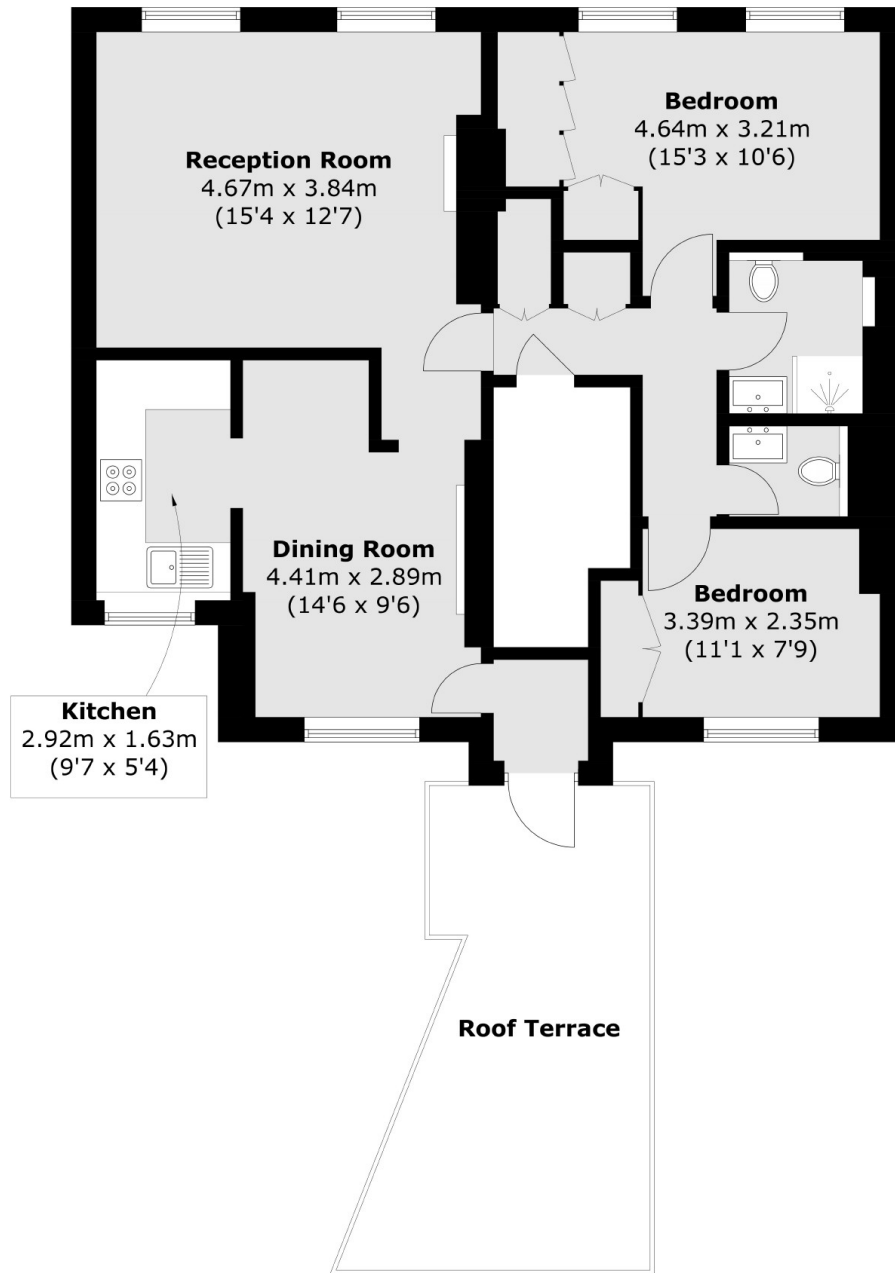
A rarely available apartment with a private terrace that has been beautifully designed by the current owners. This property has plenty of natural light, wooden floors throughout and two fireplaces.

Halsey Street is ideally located between Sloane Square and South Kensington. Pavilion Road, Duke of York Square and the King's Road are all within walking distance.

Features

- Share Of Freehold
- Excellent Condition
- Two Bedrooms
- Private Terrace (Not Demised)
- Popular Location
- Wooden Flooring

Halsey Street, London, SW3



Second Floor

Total area (approx.): 77.6 sq. m (835.3 sq. ft)

Roof Terrace: 17.1 sq. m (184 sq. ft)