



Walton Street, SW3

£1,050,000

A first floor apartment within a gated development. This property has a share of the freehold, two double bedrooms and would be an ideal pied-à-terre or long term investment.

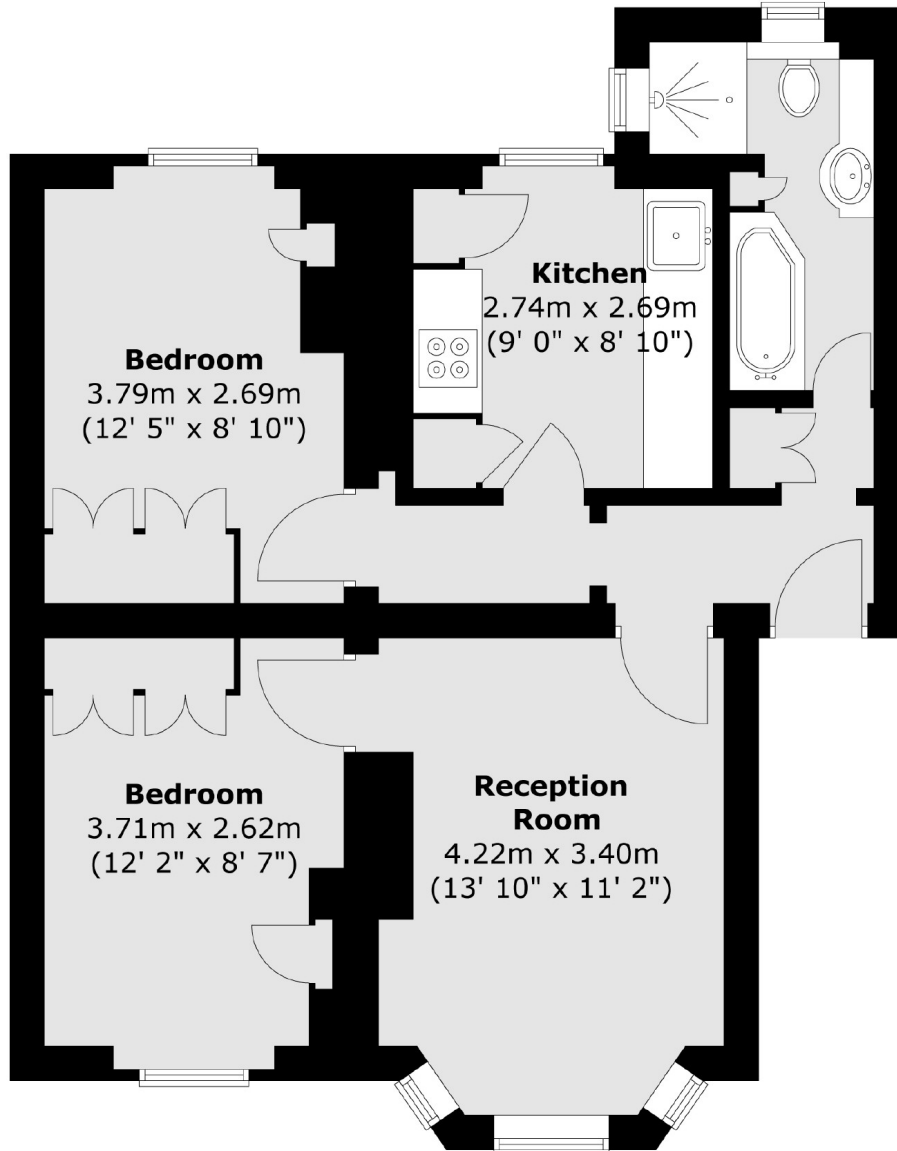
The Marlborough is a sought after, gated development on the border of Chelsea and Knightsbridge, ideally located for all that the local area has to offer.

Features

- Share Of Freehold
- First Floor
- Gated Development
- Porter
- Two Bedrooms
- Separate Kitchen

Walton Street,
London, SW3

First Floor



Total area (approx.) : 54.9 sq. m (591 sq. ft)