



Kings Road, SW3

£3,000 Per calendar month

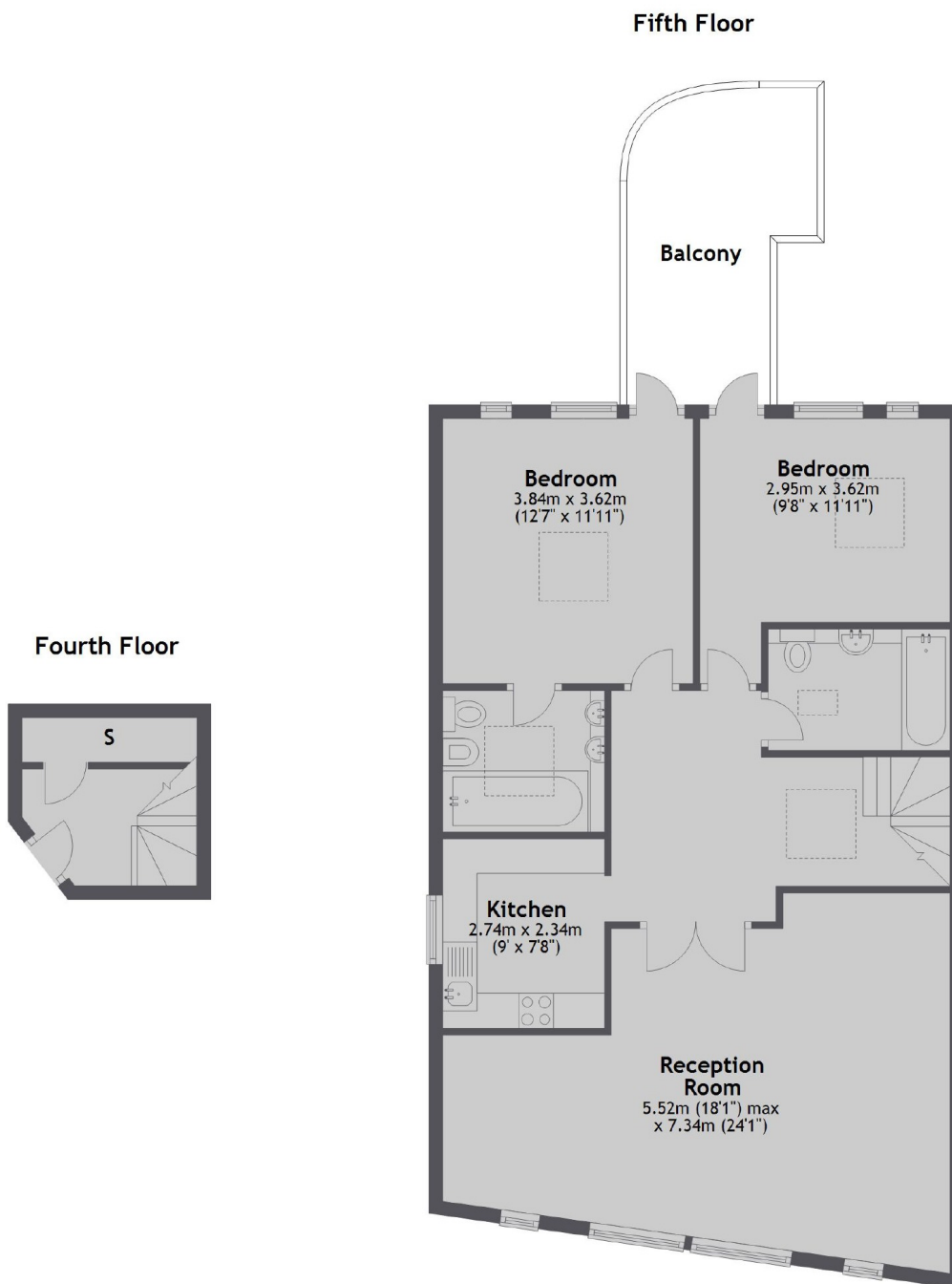
A two bedroom, two bathroom flat on the top floor of a purpose built building on the Kings Road with a lift. The flat has a "New York Loft" feel to it with light flooding in from all angles.

Located on the World famous Kings Road with a wide choice of shops, bars and cafés on the doorstep including a Waitrose supermarket and Marks and Spencer Simply Foods.

Features

- Penthouse
- Lift
- Roof Terrace
- Two Bedroom
- Two Bathroom
- Wood Floors Throughout

Kings Road, London, SW3



Total area: approx. 92.7 sq. metres (997.8 sq. feet)