



Cheyne Walk, SW3

£1,153 Per week

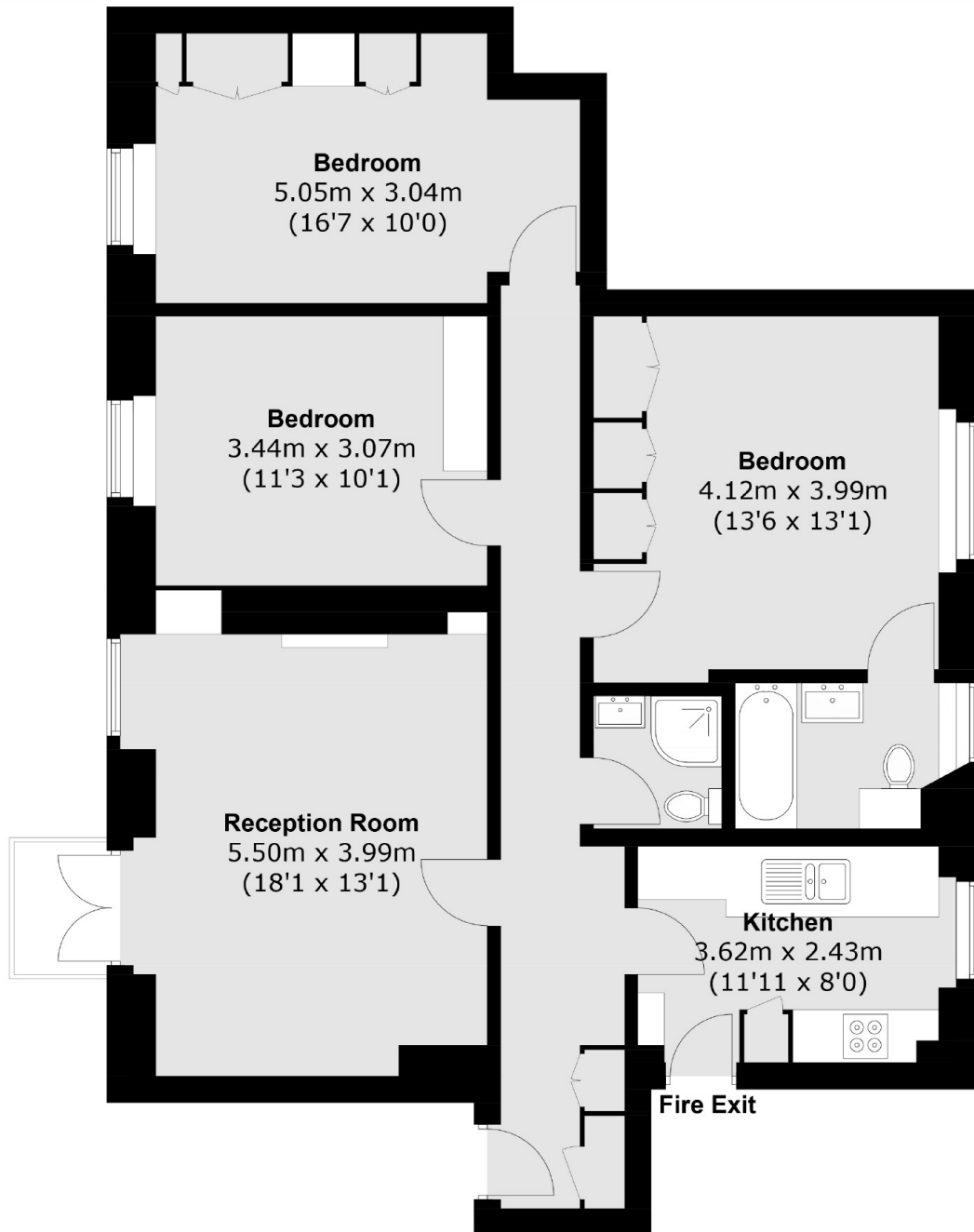
A stunning lateral apartment located on the fourth floor with the advantage of a lift and porter. The apartment benefits from three double bedroom all with built-in storage and a lovely balcony off the reception room.

Shrewsbury House is peacefully located moments from the River Thames and Albert Bridge with access to the shops and restaurants of Royal Hospital Road in addition to the Kings Road.

Features

- Three Double Bedrooms
- Two Bathrooms
- Wooden Floors Throughout
- Private Balcony
- Built-in Storage
- Porter

Cheyne Walk, London, SW3



Fourth Floor

Total area (approx.): 97.5 sq. m (1,049.5 sq. ft)

Balcony (approx.): 1.6 sq. m (17.2 sq. ft)