



## Culford Gardens, SW3

### £1,250,000

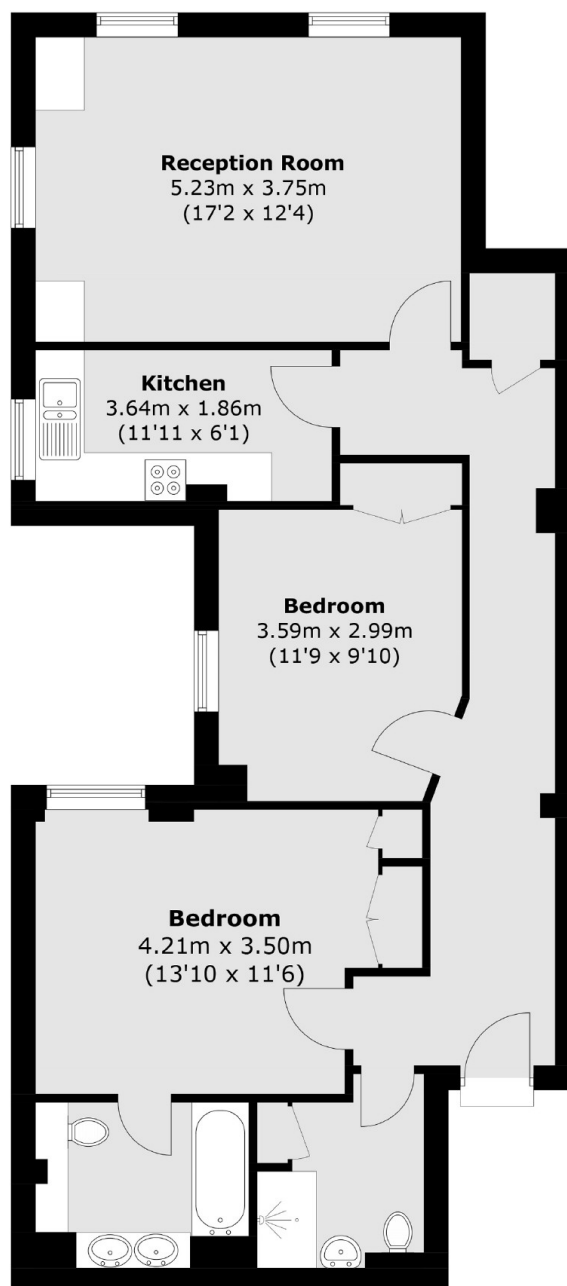
A two bedroom, two bathroom apartment positioned on the raised ground floor within a portered building moments from Duke of York Square. This property is in great condition throughout and would be a wonderful London home.

Culford Gardens is a quiet one-way street a short walk from Pavilion Road and Peter Jones. Sloane Square, Duke of York Square and Burton Court are also close by.

### Features

- Two Bedrooms
- Porter
- Popular Location
- Long Leasehold
- Great Condition
- Two Bathrooms

# Culford Gardens, London, SW3



## Raised Ground Floor

Total area (approx.): 80.8 sq. m (869.7 sq. ft)