



Chelsea Embankment, SW3

£2,250 Per week

Dexters



Chelsea Embankment, SW3

A truly unique, split level three double bedroom apartment to let in the prestigious Old Chelsea area within the red brick mansion blocks. This property is without a doubt one of the most spectacular properties available to view.

Upon entering the property is a grand hallway leading into the first double reception room with river view, high ceilings, stucco period features and a working fireplace.

Towards the rear of the property is a second double reception room with medieval features, high ceilings, a working fireplace and doors leading out onto a private garden. The kitchen is separate with an eat in area and all modern integrated appliances.

There are three bedrooms and two bathrooms. The master bedroom has an en suite bathroom and there is a further family size bathroom. Two bedrooms have doors which lead out onto the private garden.

Chelsea Embankment is a short walk from Kings Road and Sloane Square with access to all amenities, local shops, bars and restaurants. This property overlooks Battersea Park and has full frontal river views.

Features

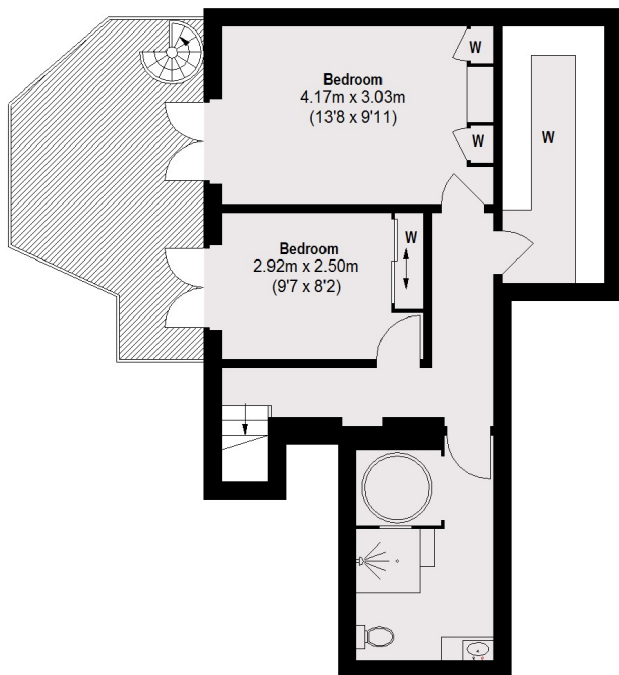
- Three Double Bedrooms
- Two Bathrooms
- Two Double Reception Rooms
- Private Garden
- Utility Room
- Riverside



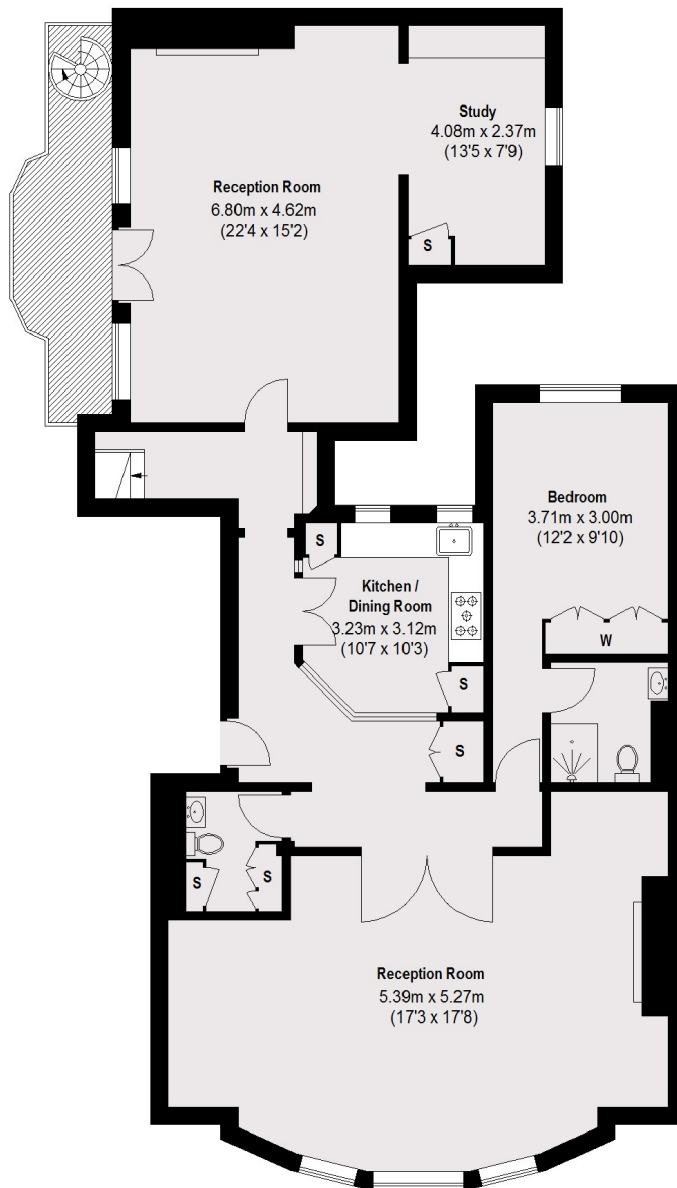




Chelsea Embankment, London, SW3



Lower Ground Floor



Ground Floor

Total area (approx.): 188.4 sq. m (2027 sq. ft)

Dexters

Chelsea and Belgravia
45 Sloane Avenue
London
SW3 3DH
Lettings
020 7590 9500

Energy Rating: D. We aim to make our particulars both accurate and reliable. However they are not guaranteed; nor do they form part of an offer or contract. If you require clarification on any points then please contact us, especially if you're traveling some distance to view. Please note that appliances and heating systems have not been tested and therefore no warranties can be given as to their good working order.

 **RICS** | Regulated
Estate Agent
and Letting Agent

dexters.co.uk