



Elystan Place, SW3

£1,650,000

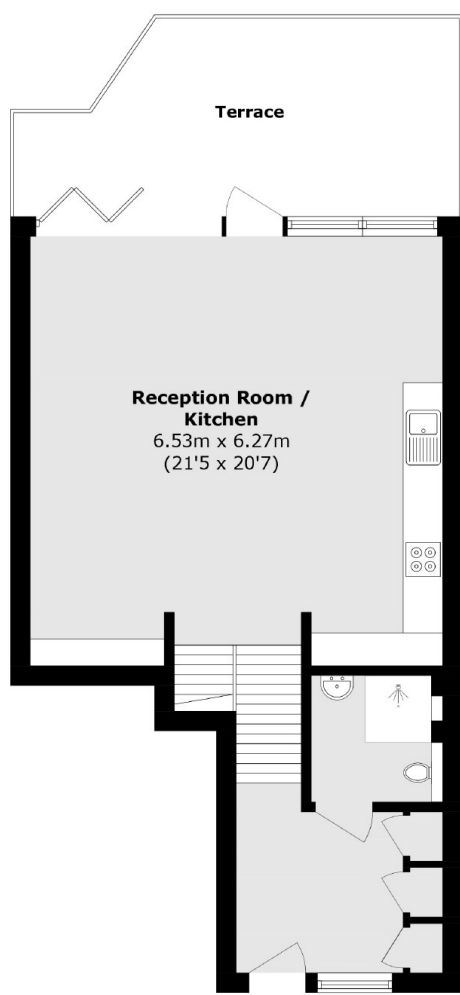
A beautifully designed apartment finished to an immaculate standard throughout. This property boasts two terraces, plenty of built in storage and a building manager.

Ranelagh House is a portered residential building on Elystan Place, north of the King's Road. Chelsea Green with all of the amenities it has to offer is within easy walking distance.

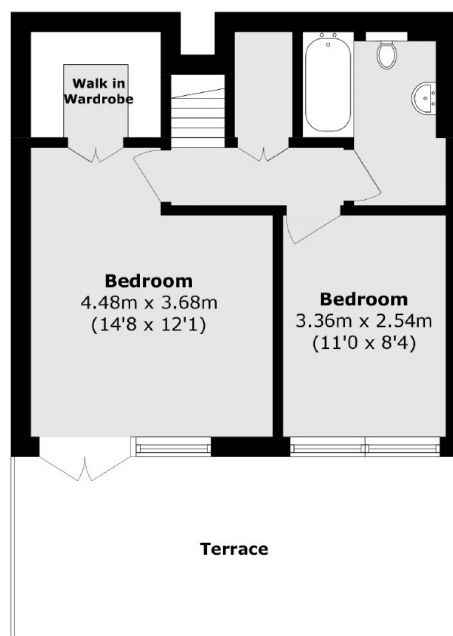
Features

- Two Private Terraces
- Lift
- Beautifully Finished
- Two Bedrooms
- Popular Location
- Building Manager

Elystan Place, London, SW3



Second Floor



First Floor

Total area (approx.): 94.3 sq. m (1015 sq. ft)

Terrace area (approx.): 38 sq. m (409 sq. ft)