



Gatliff Road, SW1W

£950,000

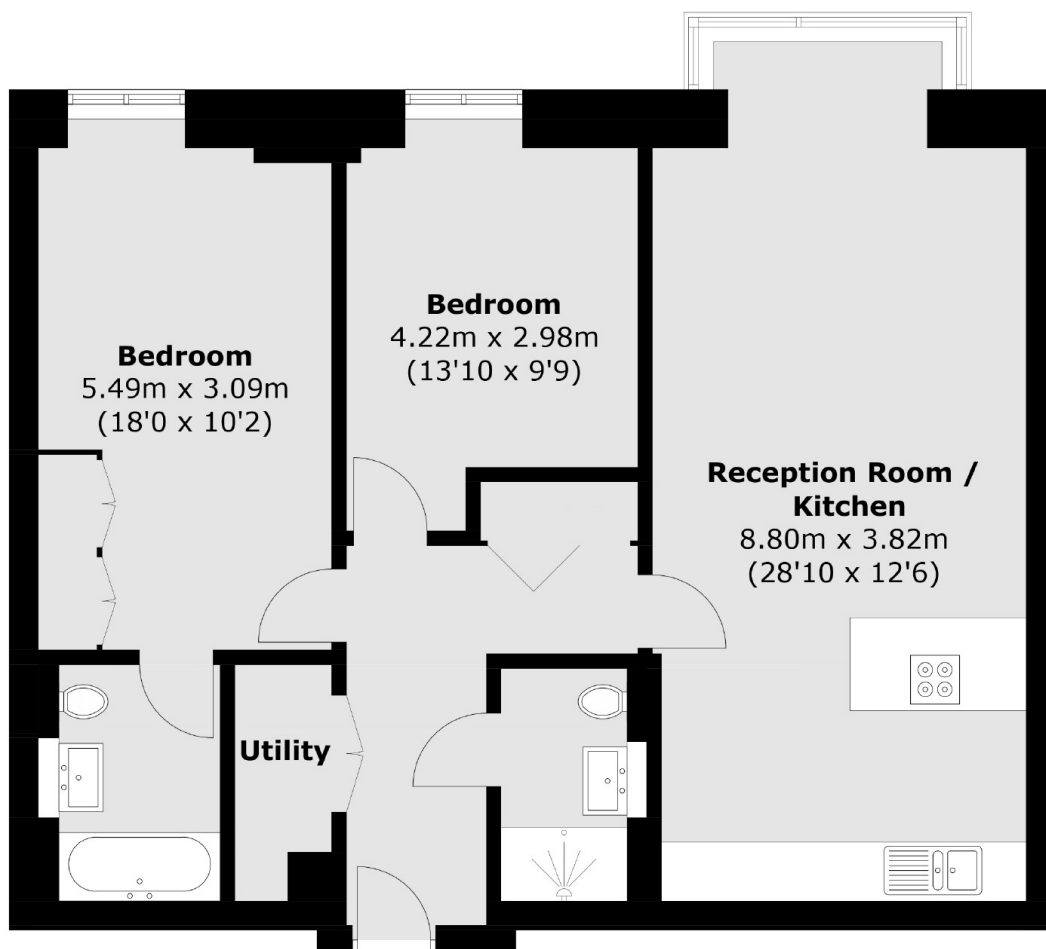
A two bedroom apartment in immaculate condition throughout. This property has recently been refurbished by the current owner and would make a great long term investment or pied-à-terre.

Grosvenor Waterside is a secure development that offers a gym, spa and treatment room. Sloane Square, Chelsea Barracks and Pavilion Road are all moments away.

Features

Secure Parking
Two Bedrooms
Porter
Lift
Great Condition
Gym & Spa

Gatliff Road, London, SW1W



Sixth Floor

Total area (approx.): 82.9 sq. m (892.3 sq. ft)

Dexters

Chelsea and Belgravia
45 Sloane Avenue
London
SW3 3DH
Sales
020 7590 9510

Energy Rating: . We aim to make our particulars both accurate and reliable. However they are not guaranteed; nor do they form part of an offer or contract. If you require clarification on any points then please contact us, especially if you're traveling some distance to view. Please note that appliances and heating systems have not been tested and therefore no warranties can be given as to their good working order.

 **RICS** | Regulated
Estate Agent
and Letting Agent

[dexters.co.uk](https://www.dexters.co.uk)