



## Radnor Walk, SW3

### £4,850,000

A beautiful family home ideally located south of the King's Road. This house has wonderful living spaces, perfect for dining and entertaining as well as a south west facing garden.

Radnor Walk is a popular one-way street off the King's Road. Burton Court, which has tennis courts, play and dog walking areas is a short walk away as is the Chelsea Physic Garden.

### Features

- Air Conditioning
- Four Bedrooms
- Excellent Condition
- Private Garden & Terrace
- Freehold
- Media Room



## Radnor Walk, SW3

This stunning home has been carefully remodelled and finished to the highest of standards throughout. Of particular note are the large living spaces, the peaceful terrace and private garden.

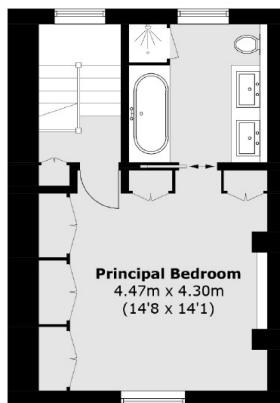
As you enter the house you are welcomed by a reception room that leads into the spacious open-plan kitchen and dining area. The lower ground floor comprises of a media room, wine cellar, steam room and a double bedroom. The first floor has two en-suite bedrooms, one with a south west facing terrace and at the top of the house in the principal bedroom en-suite.



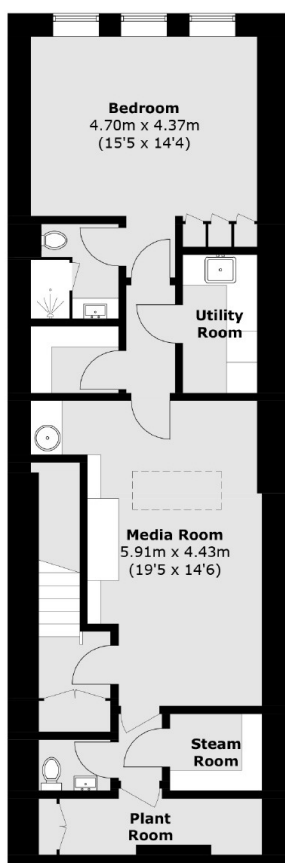




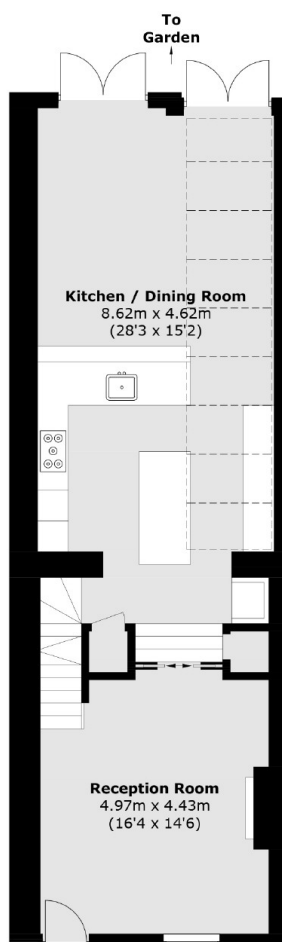
# Radnor Walk, London, SW3



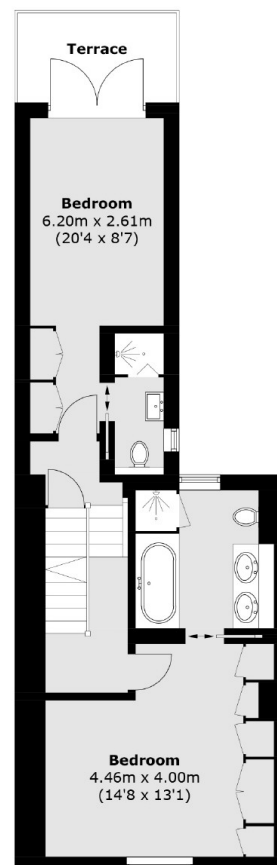
**Second Floor**



**Lower Ground Floor**



**Ground Floor**



**First Floor**

Total area (approx.): 225.8 sq. m (2,430.5 sq. ft)  
Terrace : 5.4 sq. m (58.1 sq. ft)