



## Chelsea Manor Gardens, SW3

### £900,000

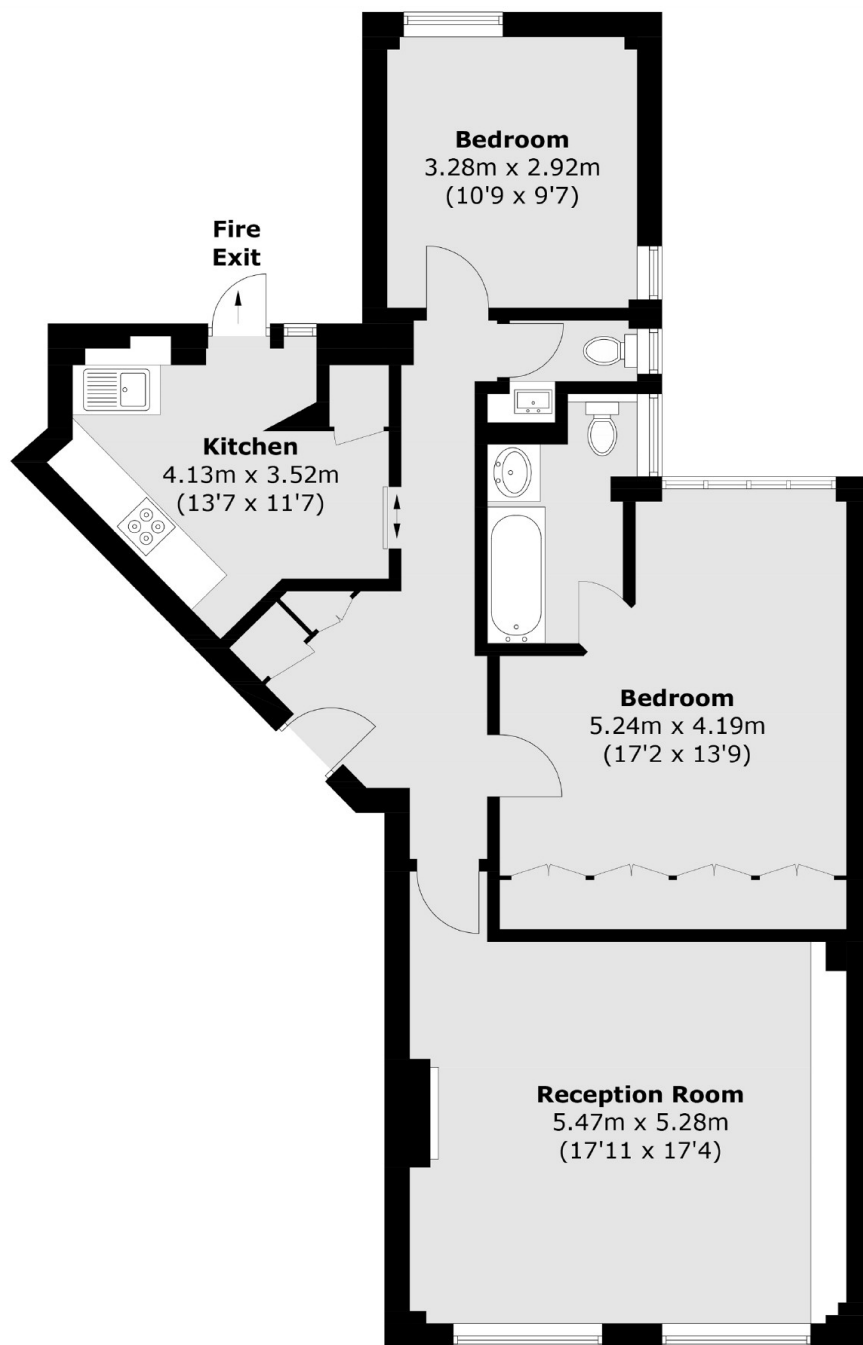
A first floor apartment flooded with natural light measuring over 900sqft. This property has a large reception room, plenty of built-in storage, lift access and is ideally positioned in the heart of Chelsea.

Kings Court South, Chelsea Manor Gardens is located south of the King's Road. Chelsea Embankment, Chelsea Green and local transport links are all within close proximity.

### Features

- Lift
- Caretaker
- Two Bedrooms
- Long Lease
- First Floor
- Communal Courtyard

# Chelsea Manor Gardens, London, SW3



## First Floor

Total area (approx.): 84.8 sq. m (912.8 sq. ft)