



Sloane Avenue, SW3

£545,000

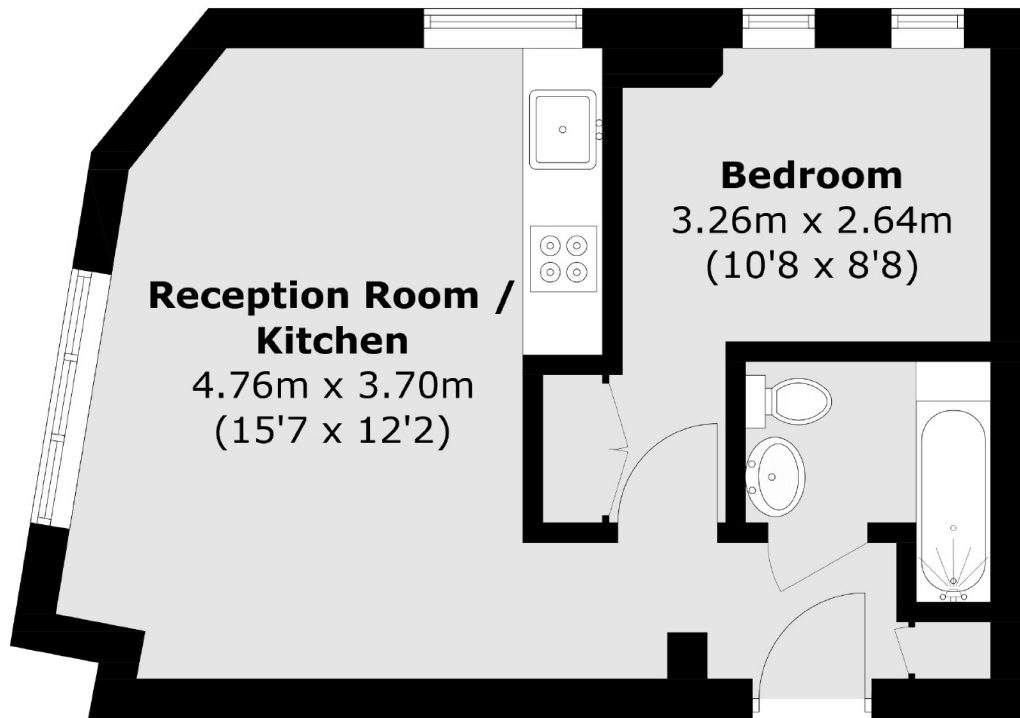
A one bedroom apartment presented in excellent condition within a portered building. Benefitting from a share of the freehold and lift access, this property would be a brilliant London base or rental investment.

Nell Gwynn House is a popular, portered block located on Sloane Avenue which is in close proximity to Sloane Square, South Kensington and the King's Road.

Features

- Share Of Freehold
- One Bedroom
- Porter
- Lift
- Excellent Condition
- Great Rental Investment

**Sloane Avenue,
London, SW3**



First Floor

Total area (approx.): 31.7 sq. m (341.2 sq. ft)