



Whiteheads Grove, SW3

£1,450,000

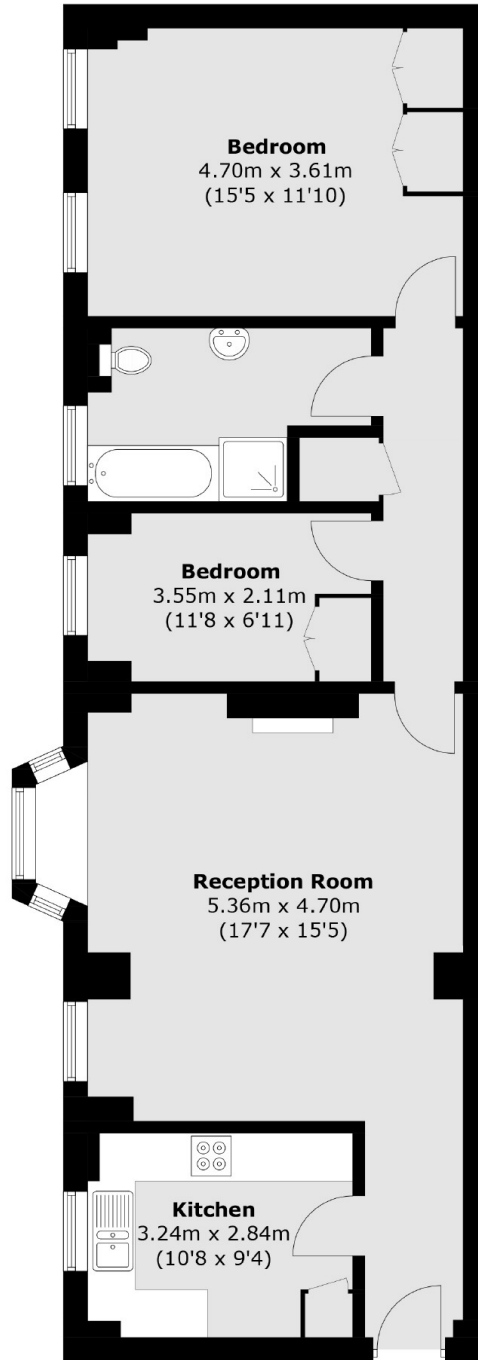
A beautifully presented two bedroom apartment located on the third floor with lift access and 24 hour portage. This charming property is in great condition throughout and benefits from a share of the freehold.

Cranmer Court is located in the heart of Chelsea, within easy reach of South Kensington and Sloane Square underground stations, as well as only moments away from the King's Road offering an excellent variety of shops, bars and restaurants.

Features

- Share Of Freehold
- 24 Hour Portage
- Two Bedrooms
- Great Condition
- Lift
- Quiet Location

Whiteheads Grove, London, SW3



Third Floor

Total area (approx.): 78.3 sq. m (843.0 sq. ft)