



Sloane Avenue, SW3

£450,000

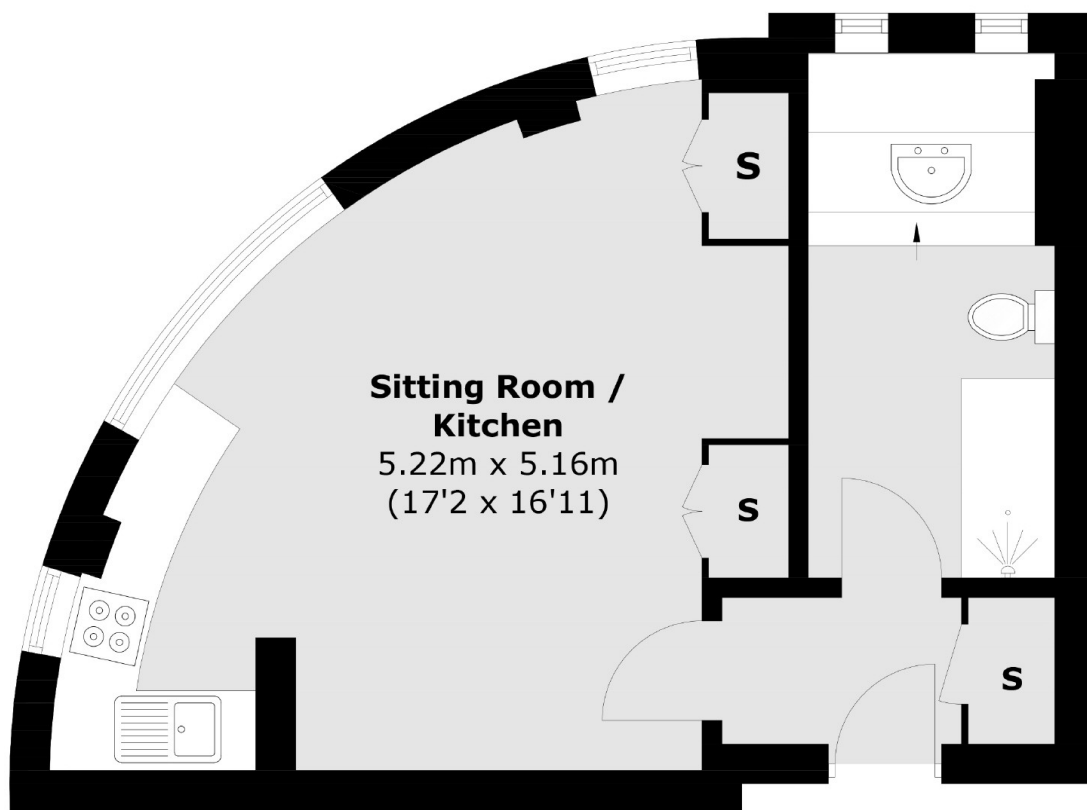
A beautifully refurbished studio situated within a popular, portered block. Located at the back of the building with lovely views on the raised ground floor, this apartment would be an ideal rental investment or London base.

Sloane Avenue Mansions is an attractive Art-Deco block positioned moments from Sloane Square, Harrods, the King's Road and Knightsbridge.

Features

- Fantastic Condition
- Leasehold
- Porter
- Lovely Views
- Ideal Investment
- Studio Apartment

Sloane Avenue, London, SW3



Ground Floor

Total area (approx.): 33.2 sq. m (357.4 sq. ft)

Dexters

Chelsea and Belgravia
45 Sloane Avenue
London
SW3 3DH
Sales
020 7590 9510

Energy Rating: . We aim to make our particulars both accurate and reliable. However they are not guaranteed; nor do they form part of an offer or contract. If you require clarification on any points then please contact us, especially if you're traveling some distance to view. Please note that appliances and heating systems have not been tested and therefore no warranties can be given as to their good working order.

 **RICS** | Regulated
Estate Agent
and Letting Agent

dexters.co.uk