



Sloane Avenue, SW3

£475,000

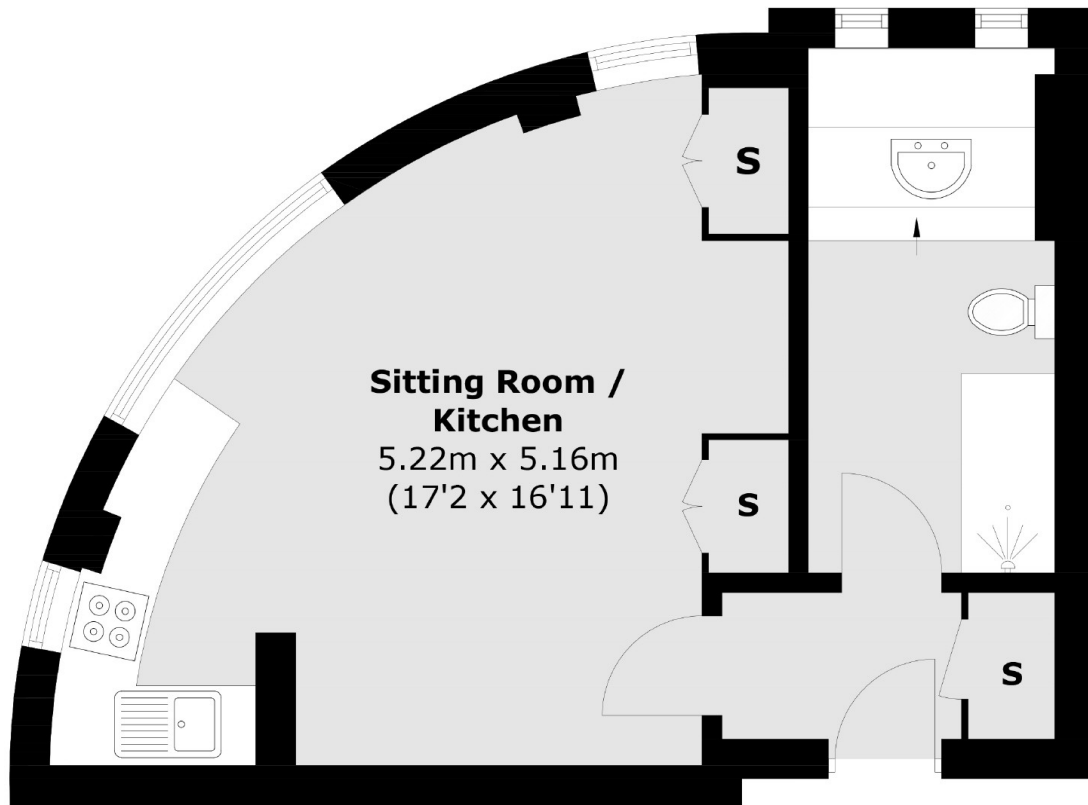
A beautifully refurbished studio situated within a popular, portered block. Located at the back of the building with lovely views on the raised ground floor, this apartment would be an ideal rental investment or London base.

Sloane Avenue Mansions is an attractive Art-Deco block positioned moments from Sloane Square, Harrods, the King's Road and Knightsbridge.

Features

- Fantastic Condition
- Leasehold
- Porter
- Lovely Views
- Ideal Investment
- Studio Apartment

Sloane Avenue, London, SW3



Ground Floor

Total area (approx.): 33.2 sq. m (357.4 sq. ft)