



Sloane Avenue, SW3

£1,250,000

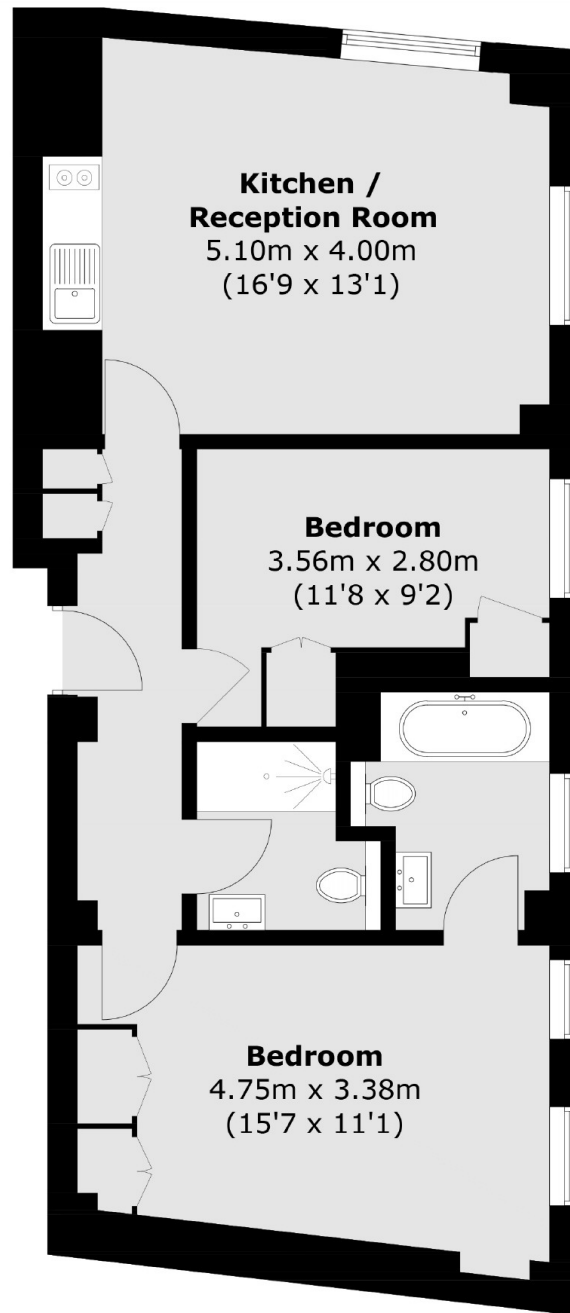
A rarely available two bedroom property within Nell Gwynn House. This apartment would work perfectly as a rental investment, London base or pied-à-terre.

Nell Gwynn House is a popular, portered block located on Sloane Avenue which is in close proximity to Sloane Square, South Kensington and the King's Road.

Features

- Share Of Freehold
- Great Views
- Porters
- Two Bedrooms
- Two Bathrooms
- Excellent Rental Investment

Sloane Avenue, London, SW3



Seventh Floor

Total area (approx.): 59.3 sq. m (638.3 sq. ft)