



Whiteheads Grove, SW3

£700,000

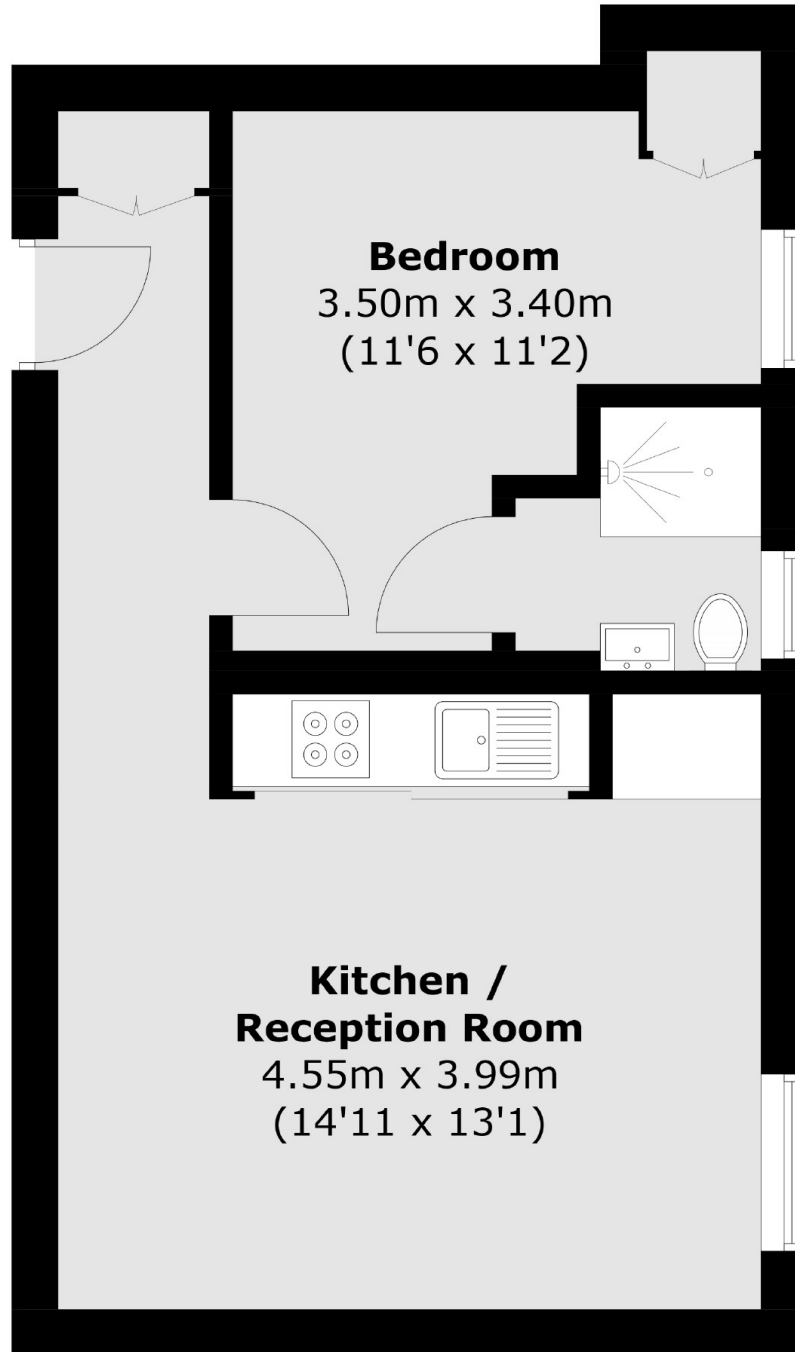
A one bedroom flat situated within Cranmer Court. The property is conveniently positioned within the development and would work excellently as a pied-à-terre or rental investment.

Cranmer Court is located parallel to Sloane Avenue which is ideally situated between Sloane Square and South Kensington tube stations. The local cafés and boutique shops Chelsea Green has to offer are also moments away.

Features

- Leasehold
- One Bedroom
- First Floor
- Pied-à-Terre
- Portered
- Lift

Whiteheads Grove, London, SW3



Total area (approx.): 35.8 sq. m (385.3 sq. ft)