



Chelsea Cloisters, SW3

£750 Per week

A newly refurbished two double bedroom flat to let on the sixth floor of this popular portered mansion block in the heart of Chelsea. The large living room, separate kitchen and two double bedrooms makes this property ideal for professional sharers.

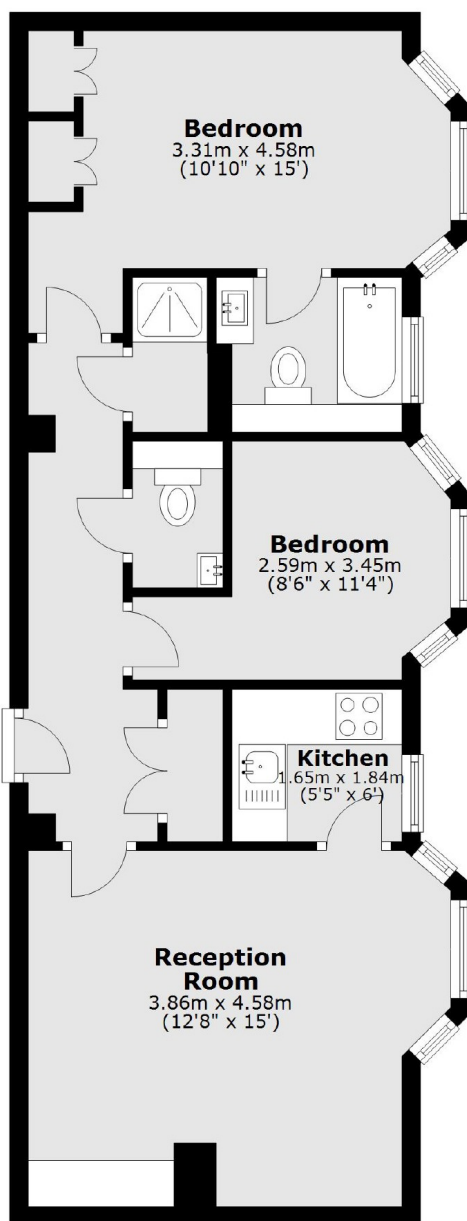
Chelsea Cloisters is excellently located between Sloane Square and South Kensington tube stations. The world famous shops and restaurants the Kings Road have to offer are also within walking distance.

Features

- Two Bedrooms
- Two Bathrooms
- 24 Hour Concierge
- Lift Access
- Recently Refurbished
- Central Location

Chelsea Cloisters, London, SW3

Sixth Floor



Total area: approx. 54.5 sq. metres (586.5 sq. feet)