



## Draycott Place, SW3

### £1,150,000

A remodelled and redesigned property with a south-facing terrace offering stunning views across Chelsea. This apartment is located on the fourth floor (with lift) and would be an ideal London home or rental investment.

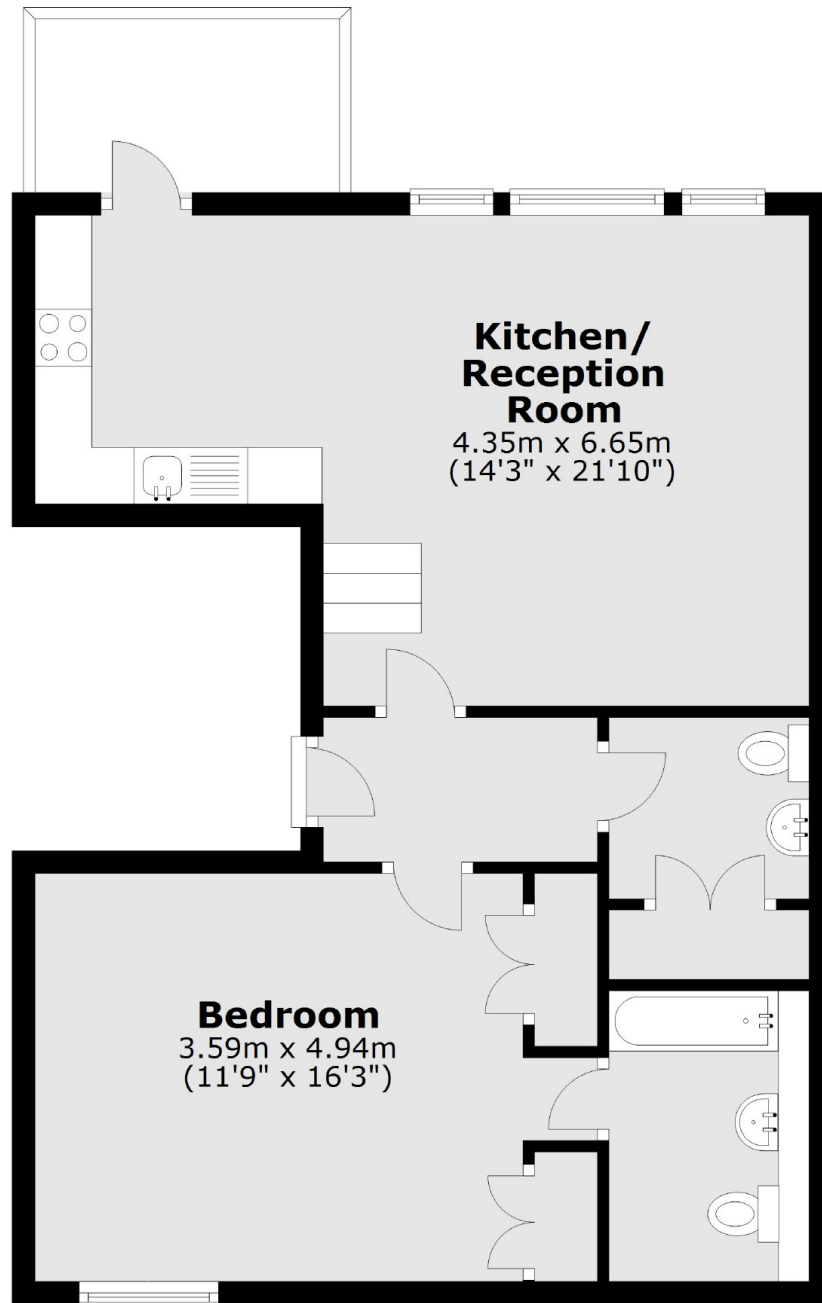
Draycott Place runs parallel to the King's Road which is home to plenty of boutique shops and restaurants. Duke of York Square, Pavilion Road and South Kensington tube station are all within walking distance.

### Features

- South-Facing Terrace
- Lift
- Excellent Condition
- Long Leasehold
- Air Conditioning
- Separate Utilities

# Draycott Place, London, SW3

## Fourth Floor



Total area: approx. 55.6 sq. metres (598.3 sq. feet)

# Dexters

Chelsea and Belgravia  
45 Sloane Avenue  
London  
SW3 3DH  
Sales  
020 7590 9510

Energy Rating: D. We aim to make our particulars both accurate and reliable. However they are not guaranteed; nor do they form part of an offer or contract. If you require clarification on any points then please contact us, especially if you're traveling some distance to view. Please note that appliances and heating systems have not been tested and therefore no warranties can be given as to their good working order.

 **RICS** | Regulated  
Estate Agent  
and Letting Agent

[dexters.co.uk](https://www.dexters.co.uk)