



Draycott Place, SW3

£1,150,000

A remodelled and redesigned property with a south-facing terrace offering stunning views across Chelsea. This apartment is located on the fourth floor (with lift) and would be an ideal London home or rental investment.

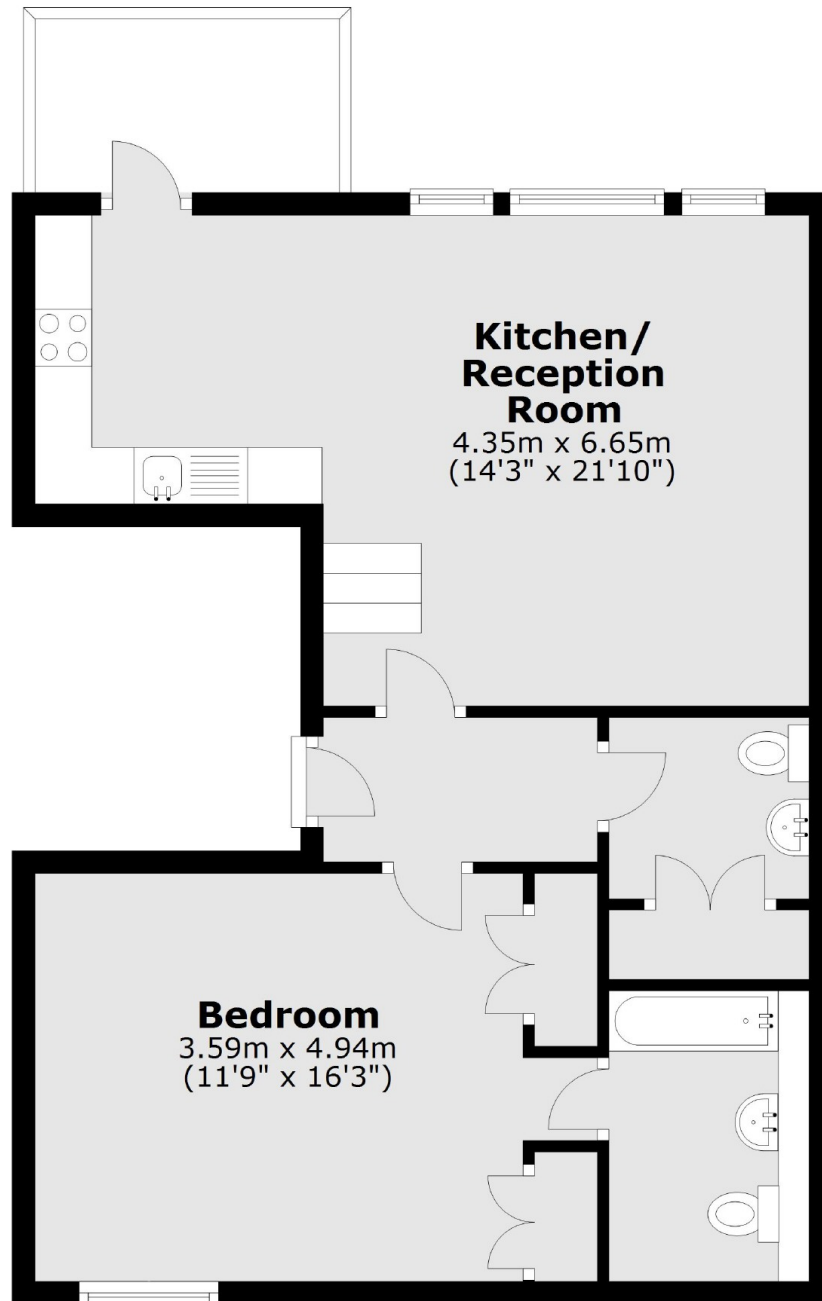
Draycott Place runs parallel to the King's Road which is home to plenty of boutique shops and restaurants. Duke of York Square, Pavilion Road and South Kensington tube station are all within walking distance.

Features

- South-Facing Terrace
- Lift
- Excellent Condition
- Long Leasehold
- AC In Bedroom
- Separate Utilities

Draycott Place, London, SW3

Fourth Floor



Total area: approx. 55.6 sq. metres (598.3 sq. feet)