



Sloane Avenue, SW3

£495,000

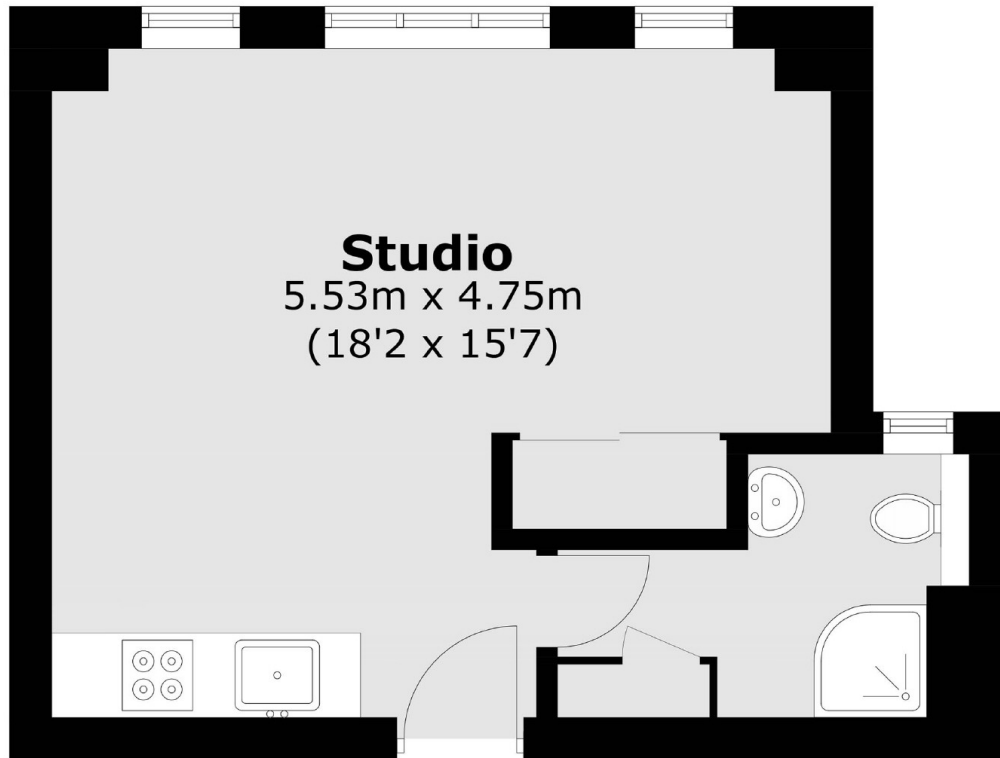
A beautifully refurbished apartment with excellent views over Chelsea's rooftops. This property would be a perfect London pied-à-terre or a great rental investment.

Nell Gwynn House is a popular, portered block located on Sloane Avenue which is in close proximity to Sloane Square, South Kensington and the King's Road

Features

- Share Of Freehold
- Recently Refurbished
- Lift
- Porters
- Great Rental Investment
- Popular Location

Sloane Avenue, London, SW3



Fourth Floor

Total area (approx.): 28.2 sq. m (303.5 sq. ft)