



Beaufort Street, SW3

£650,000

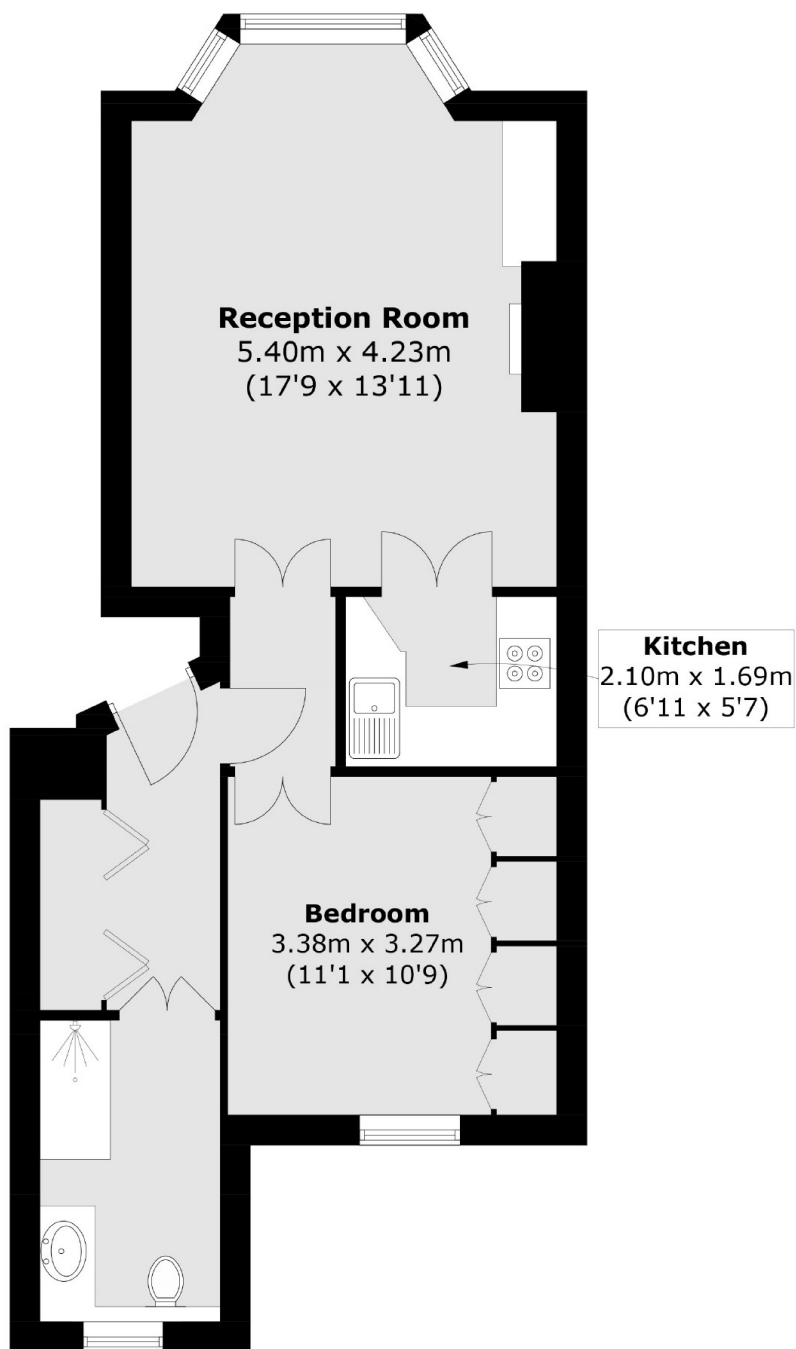
A one bedroom flat measuring over 500sqft. Located on the raised ground floor and boasting high ceilings as well as a share of the freehold, this property would be an ideal pied-à-terre. The property also benefits from 75 sq.ft of internal loft storage space.

Beaufort Street runs between the Fulham Road and Chelsea Embankment. Local transport links, restaurants and cafés are all within easy walking distance.

Features

- Share Of Freehold
- High Ceilings
- Raised Ground Floor
- Popular Location
- Low Service Charge
- One Bedroom Apartment

Beaufort Street,
London, SW3



Raised Ground Floor

Total area (approx.): 49.2 sq. m (529.5 sq. ft)

Dexters

Chelsea and Belgravia
45 Sloane Avenue
London
SW3 3DH
Sales
020 7590 9510

Energy Rating: C. We aim to make our particulars both accurate and reliable. However they are not guaranteed; nor do they form part of an offer or contract. If you require clarification on any points then please contact us, especially if you're traveling some distance to view. Please note that appliances and heating systems have not been tested and therefore no warranties can be given as to their good working order.

 **RICS** | Regulated
Estate Agent
and Letting Agent

dexters.co.uk