



Markham Square, SW3

£2,750,000

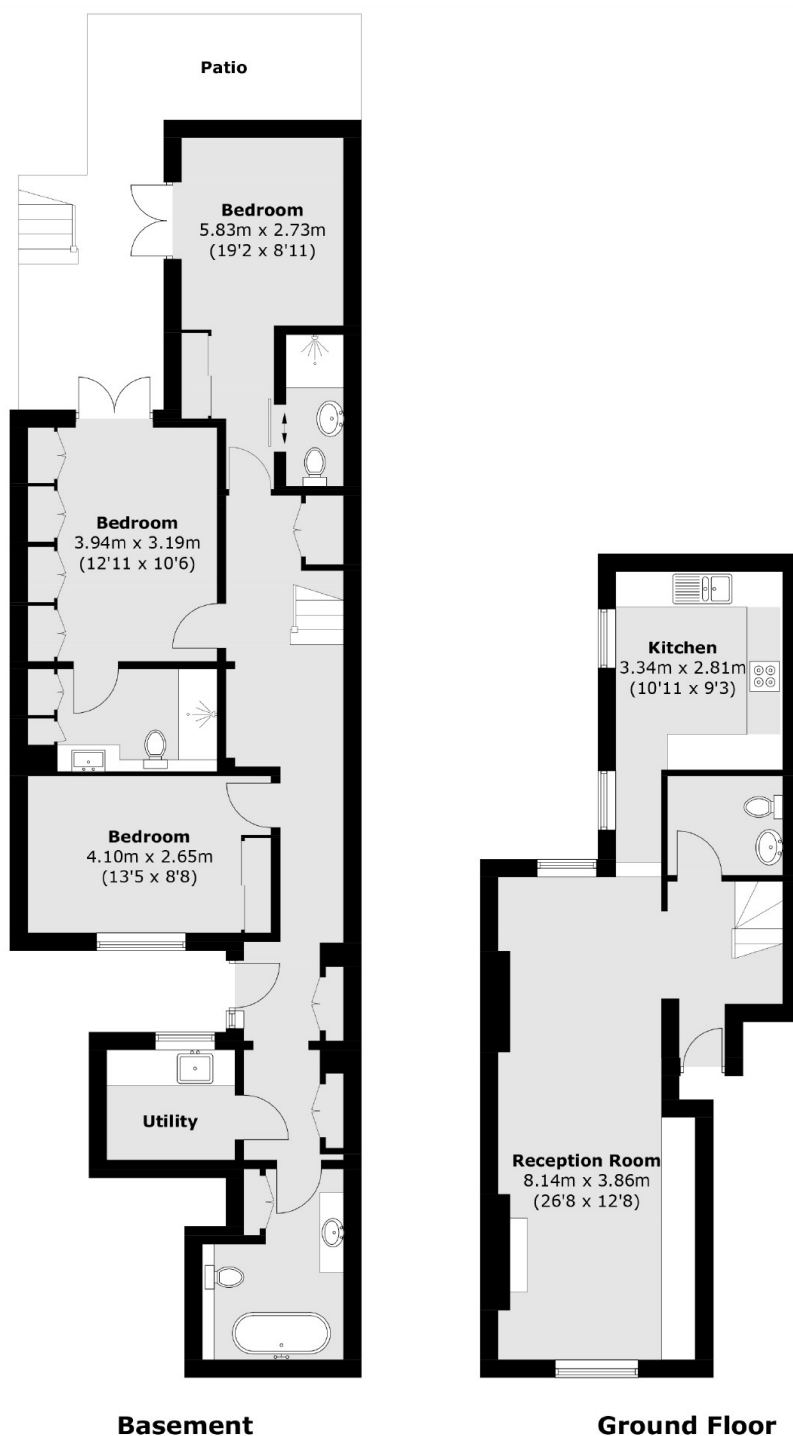
A beautiful apartment boasting high ceilings and three double bedrooms. This property has been refurbished to an immaculate standard and of particular note is a discreet walkway leading from the property to the amenities of Chelsea Green.

Markham Square dates back to 1836 and is widely regarded as one of Chelsea's finest addresses. Chelsea Green, Pavilion Road and Sloane Square are all moments away.

Features

- Immaculate Condition
- Three Double Bedrooms
- Private Patio Garden
- Quiet Location
- High Ceilings
- Access To Communal Gardens

Markham Square, London, SW3



Total area (approx.): 122.7 sq. m (1,320.6 sq. ft)

Dexters

Chelsea and Belgravia
45 Sloane Avenue
London
SW3 3DH
Sales
020 7590 9510

Energy Rating: D. We aim to make our particulars both accurate and reliable. However they are not guaranteed; nor do they form part of an offer or contract. If you require clarification on any points then please contact us, especially if you're traveling some distance to view. Please note that appliances and heating systems have not been tested and therefore no warranties can be given as to their good working order.

 **RICS** | Regulated
Estate Agent
and Letting Agent

[dexters.co.uk](https://www.dexters.co.uk)