



Markham Square, SW3

£2,950,000

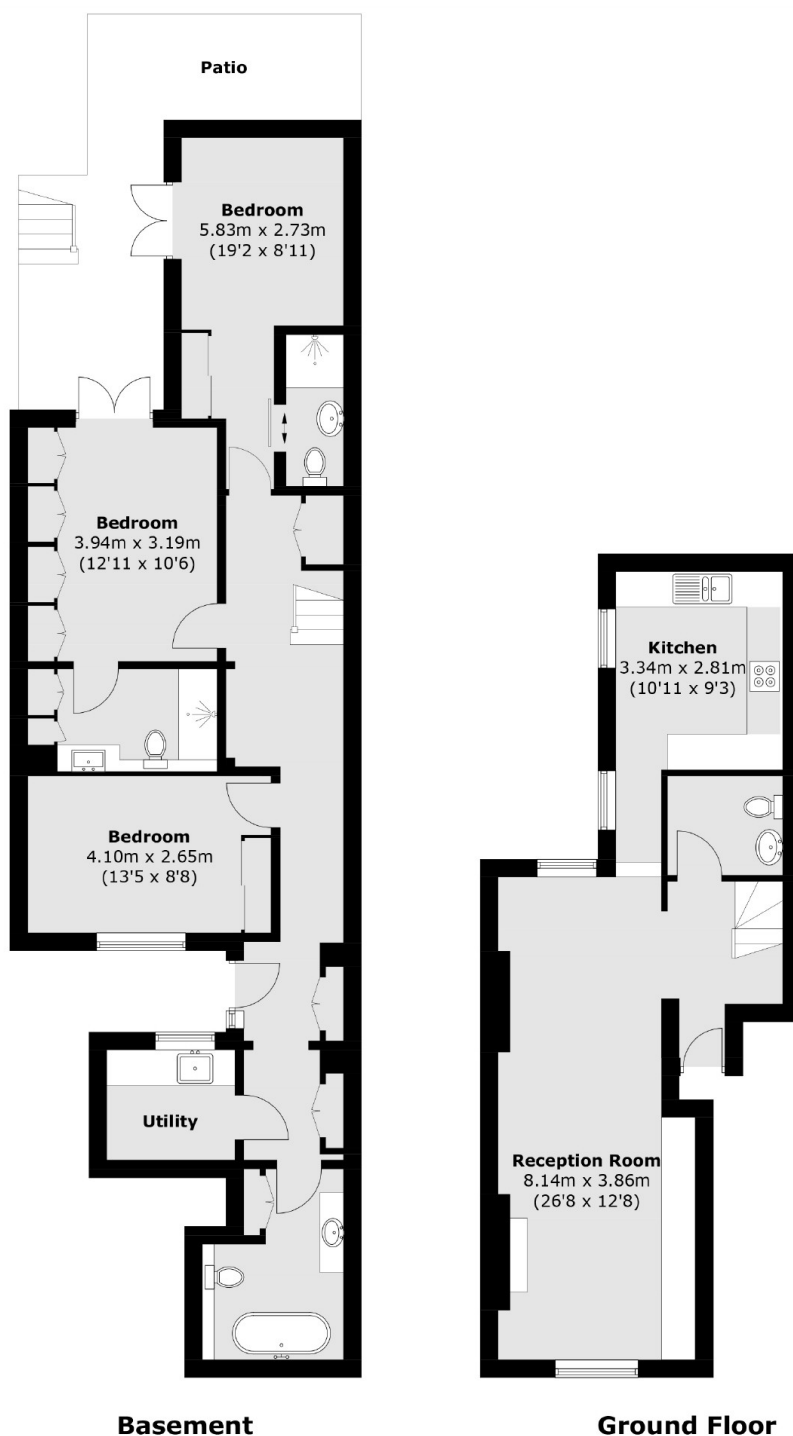
A beautiful apartment boasting high ceilings and three double bedrooms. This property has been refurbished to an immaculate standard and of particular note is a discreet walkway leading from the property to the amenities of Chelsea Green.

Markham Square dates back to 1836 and is widely regarded as one of Chelsea's finest addresses. Chelsea Green, Pavilion Road and Sloane Square are all moments away.

Features

- Immaculate Condition
- Three Double Bedrooms
- Private Patio Garden
- Low Outgoing Charges
- High Ceilings
- Access To Communal Gardens

Markham Square, London, SW3



Total area (approx.): 122.7 sq. m (1,320.6 sq. ft)