



Walton Street, SW3

£775,000

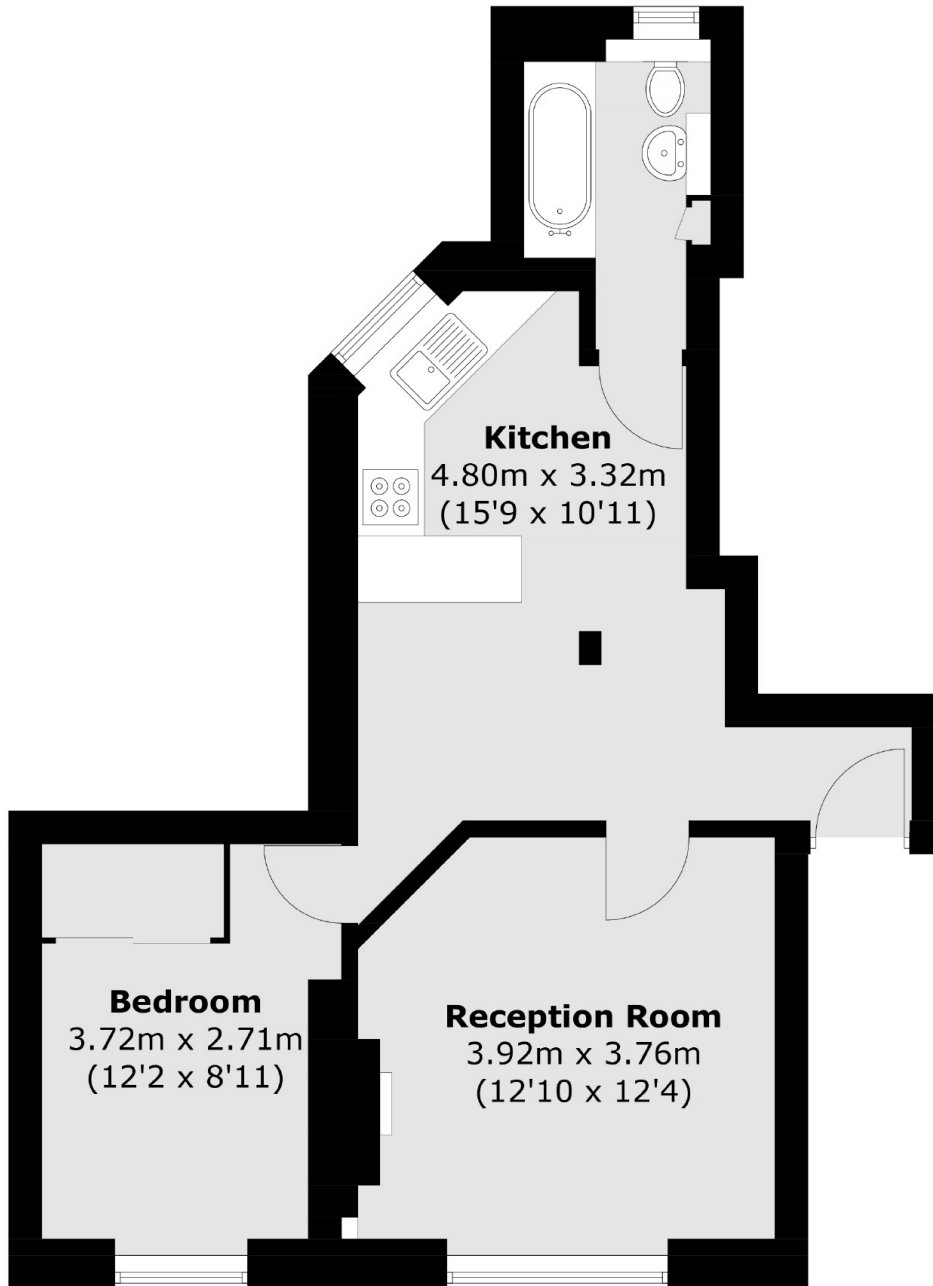
A modern one bedroom apartment within a sought-after, private development. This property has been remodelled by the current owners to make use of the natural light and space.

The Marlborough is a sought after, gated development on the border of Chelsea and Knightsbridge, ideally located for all that the local area has to offer.

Features

- Share Of Freehold
- Porter
- One Bedroom
- Communal Courtyard
- Secure Development
- Excellent Condition

**Walton Street,
London, SW3**



Third Floor

Total area (approx.): 45.4 sq. m (488.7 sq. ft)