



Beaufort Street, SW3

£850,000

A large three bedroom apartment that would work as an excellent rental investment or London base. This property has a large reception room, well proportioned bedrooms and a separate eat-in kitchen.

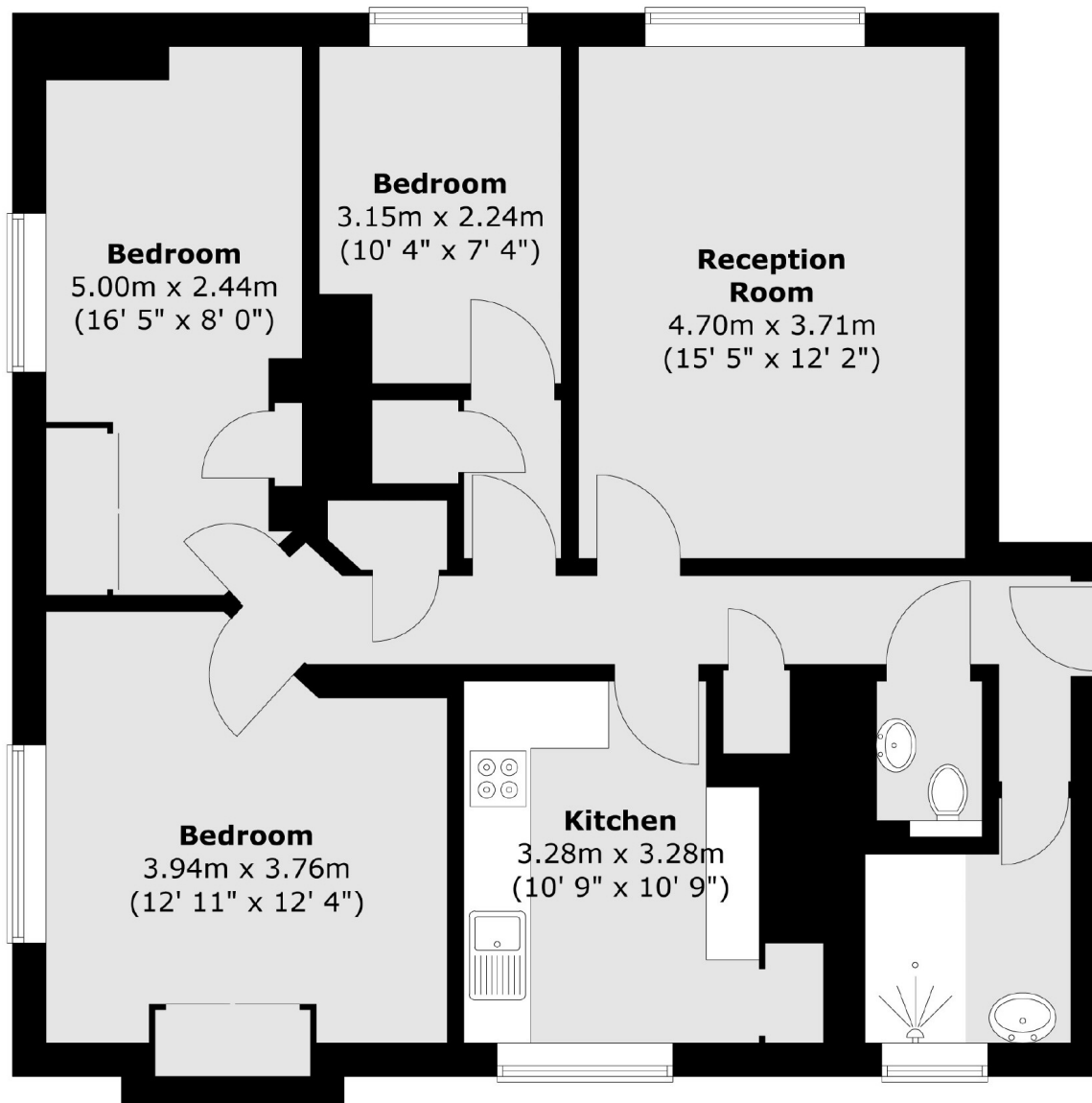
Burleigh House is ideally positioned between the King's Road and Chelsea Embankment. Local transport links to the West End and a number of cafés, restaurants and shops are moments away.

Features

- Leasehold
- Three Bedrooms
- Great Rental Investment
- Good Condition
- Second Floor
- Plenty of Natural Light

Beaufort Street, London, SW3

Second Floor



Total area (approx.) : 80.9 sq. m (871 sq. ft)