



Sloane Avenue, SW3

£542 Per week

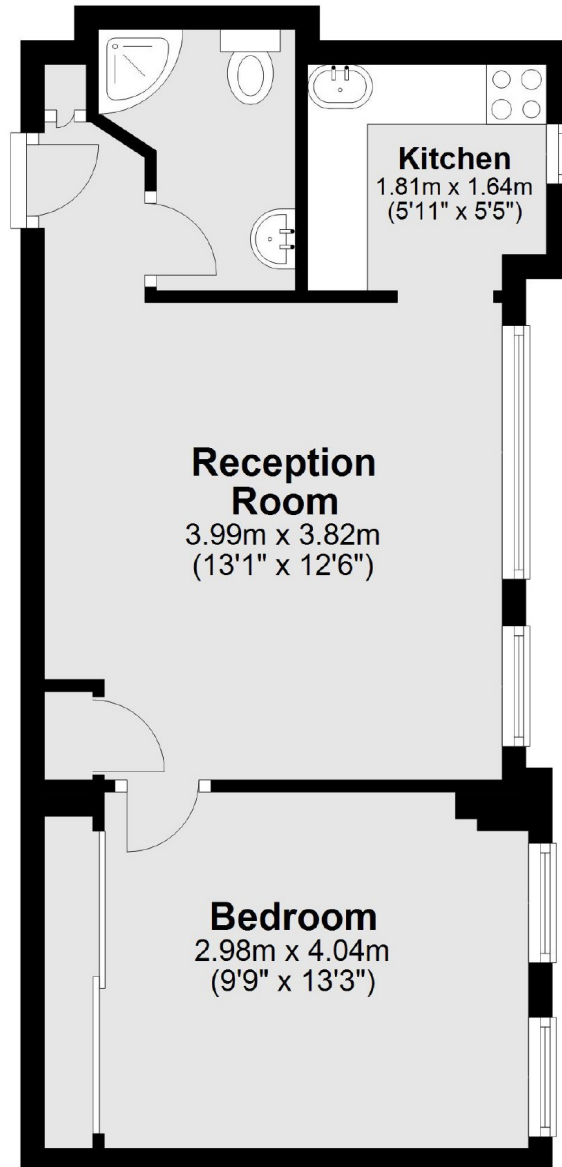
A one bedroom apartment in a portered mansion building with a porter and lift access. Perfect flat for a single professional, student or couple.

Sloane Avenue Mansions is ideally located between Kings Road and Brompton Road in the heart of Chelsea. Just moments from all the exciting shops and restaurants of Sloane Avenue, Fulham Road, Walton Street and Kings Road.

Features

- One Bedroom
- Separate Kitchen
- On-Site Porter
- Close to Transport
- Lift Access
- Newly Redecorated

Sloane Avenue, London, SW3



Total area: approx. 36.3 sq. metres (391.1 sq. feet)