



Chelsea Manor Street, SW3

£615,000

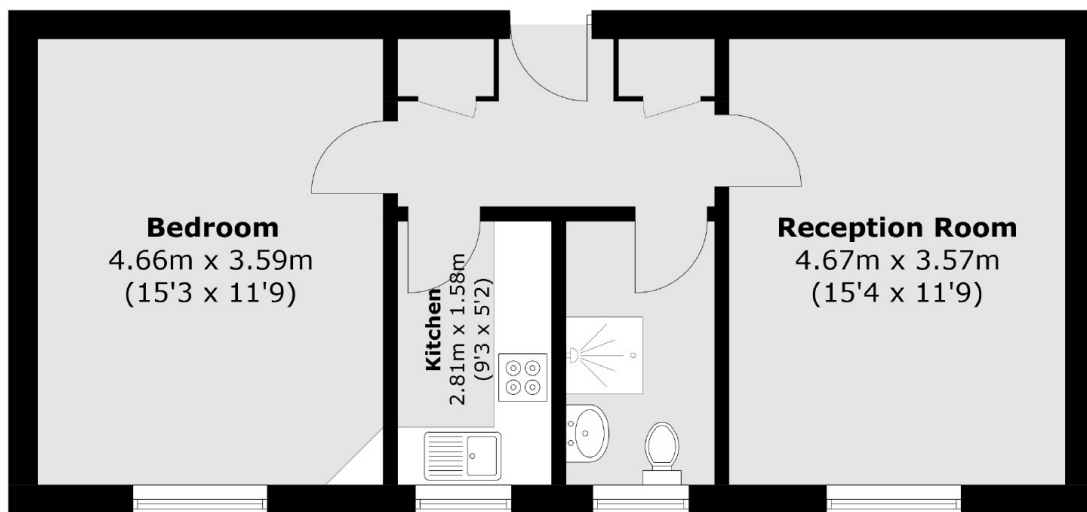
A well presented fourth floor apartment moments from the King's Road. This building benefits from a lift, porter and communal heating and hot water.

Meriden Court is located north of the King's Road, moments from Chelsea Green and St Luke's Gardens. Sloane Square and South Kensington tube stations are both within walking distance.

Features

- Fourth Floor (With Lift)
- Porter
- Long Leasehold
- Ideal Rental Investment
- Popular Location
- Good Condition

Chelsea Manor Street, London, SW3



Total area (approx.): 49.9 sq. m (537.1 sq. ft)

Dexters

Chelsea and Belgravia
45 Sloane Avenue
London
SW3 3DH
Sales
020 7590 9510

Energy Rating: - We aim to make our particulars both accurate and reliable. However they are not guaranteed; nor do they form part of an offer or contract. If you require clarification on any points then please contact us, especially if you're traveling some distance to view. Please note that appliances and heating systems have not been tested and therefore no warranties can be given as to their good working order.

 **RICS** | Regulated
Estate Agent
and Letting Agent

dexters.co.uk