



The Gateways, SW3

£1,850,000

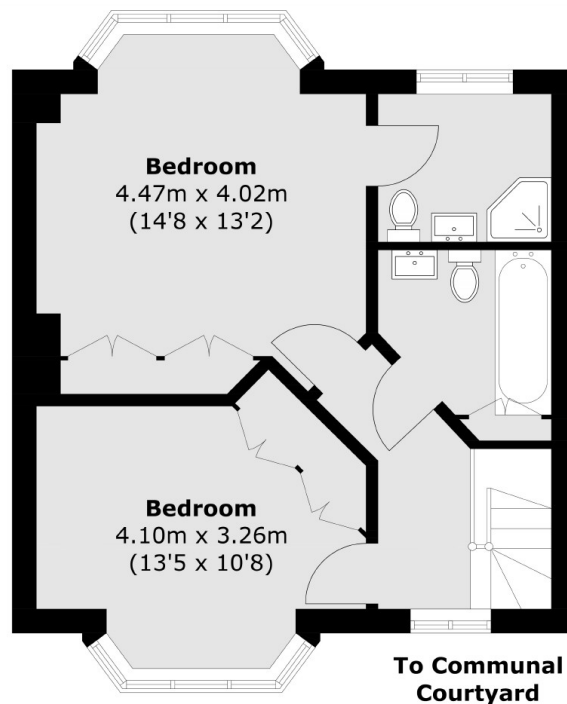
A two bedroom, two bathroom property available for the first time in over 20 years. This property has worked perfectly as a rental investment for the current owners although would also suit someone looking for a London base.

The Gateways (built in 1934) is a well-regarded Grade II listed development, moments from Chelsea Green, Sloane Square and Pavilion Road.

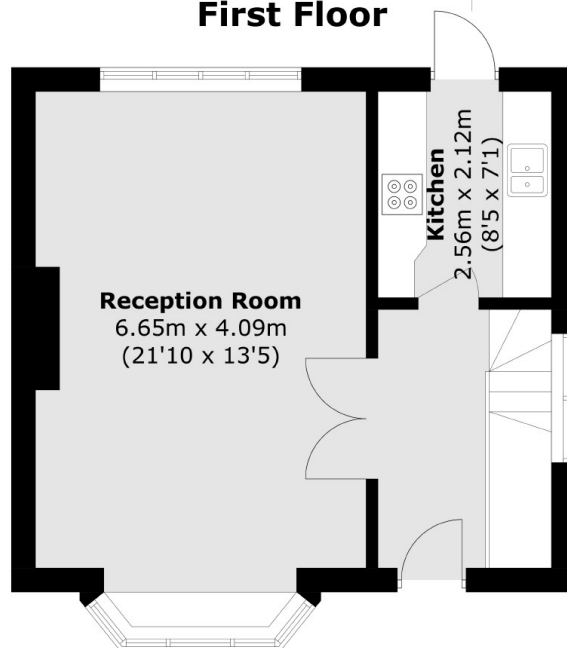
Features

- Grade II Listed
- Secure Development
- Two Bedrooms
- Communal Courtyard
- Two Bathrooms
- Freehold

The Gateways, London, SW3



First Floor



Ground Floor

Total area (approx.): 83.9 sq. m (903.1 sq. ft)