



Gatliff Road, SW1W

£925,000

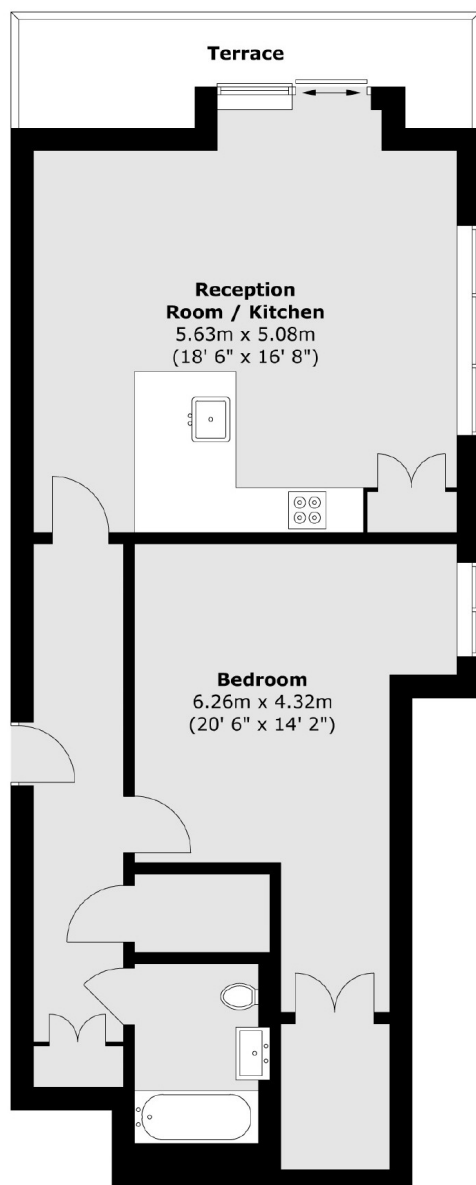
A large one bedroom apartment in excellent condition with plenty of natural light. This property has outstanding views from the fifth floor, plenty of storage and would be an ideal London base or long term investment.

Grosvenor Waterside is a secure development that offers a gym, spa and treatment room. Sloane Square, Chelsea Barracks and Pavilion Road are all moments away.

Features

- Balcony
- Secure Parking
- Lift
- Porter
- One Bedroom
- Gym & Spa

Gatliff Road, London, SW1W



Total area (approx.) : 71 sq. m (764 sq. ft)
Total terrace area (approx.) : 6.6 sq. m (71 sq. ft)