



Fernshaw Close, SW10

£2,000,000

A unique three bedroom property approached through a private walkway. This semi-detached house has a large reception room with high ceilings, a private garden, terrace and potential to extend (STPP).

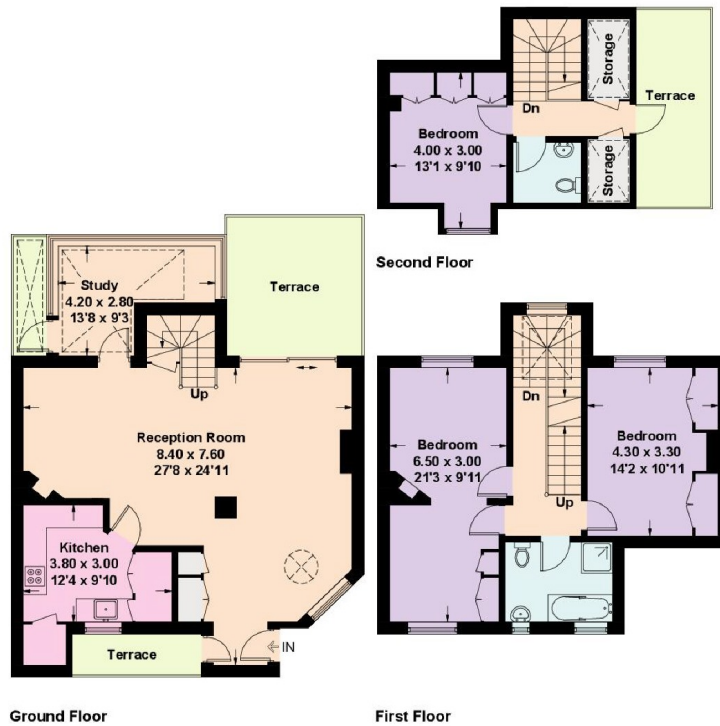
Fernshaw Road is a quiet, tree lined street between the King's Road and the Fulham Road. A number of restaurants and local transport links are close by.

Features

- Freehold
- Semi-Detached
- Courtyard Garden
- Three Bedrooms
- Private Walkway
- Development Potential (STPP)

Fernshaw Close, London, SW10

Fernshaw Close, SW10
Approximate Floor Area = 144 sq m / 1553 sq ft



This plan is for layout guidance only. Not drawn to scale unless stated. Windows and door openings are approximate. Whilst every care is taken in the preparation of this plan, please check all dimensions, shapes and compass bearings before making any decisions reliant upon them. (ID1064834)