



Culford Gardens, SW3

£2,950,000

A charming three bedroom apartment with a 25ft wide reception room. This property is set within a well-maintained building and is in great condition throughout.

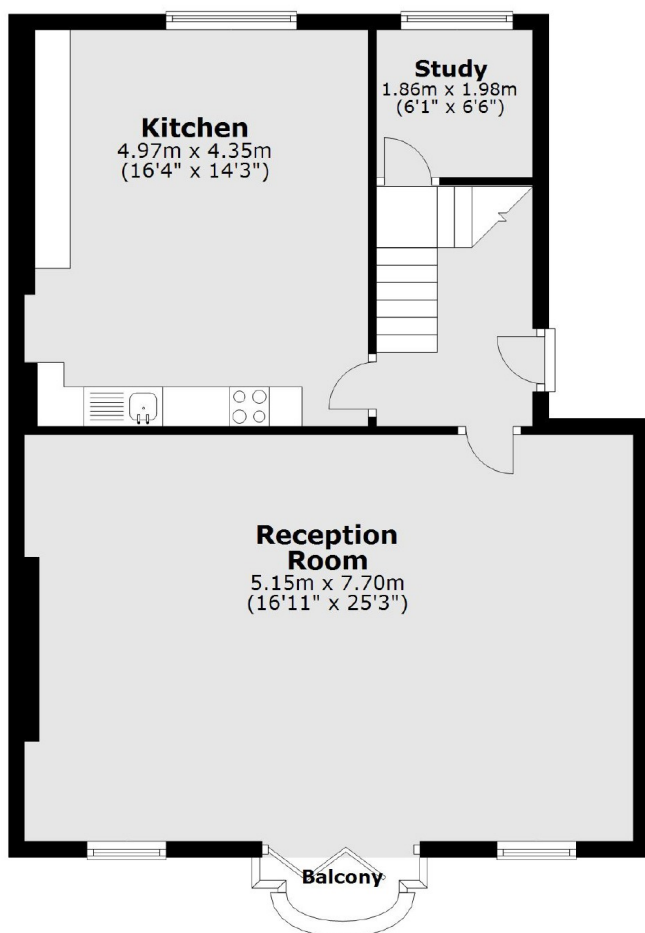
Culford Gardens is a quiet one-way street a short walk from Pavilion Road and Peter Jones. Sloane Square, Duke of York Square and Burton Court are also close by.

Features

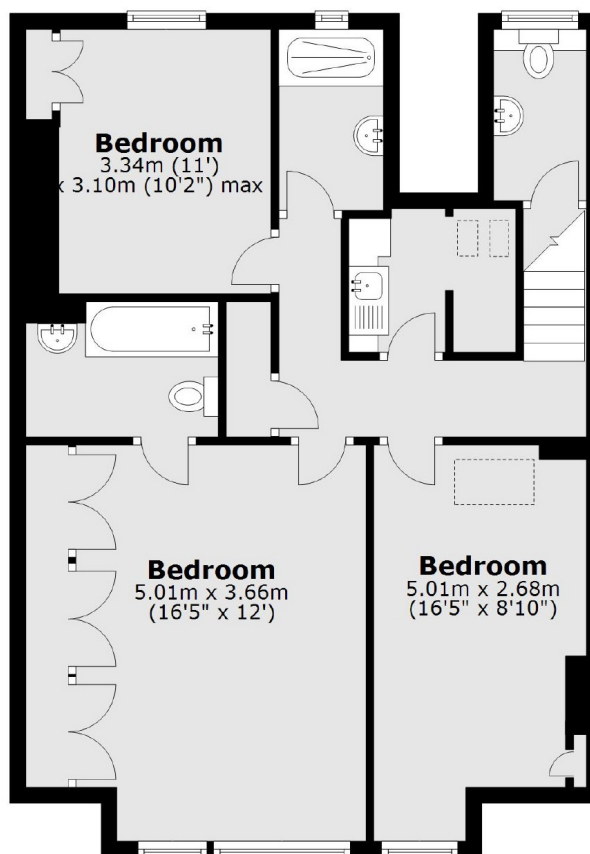
- Share Of Freehold
- High Ceilings
- Close to Pavilion Road
- Three Bedrooms
- Smart Communal Areas
- Study & Storage Room

Culford Gardens, London, SW3

Second Floor



Third Floor



Main area: Approx. 140.1 sq. metres (1507.7 sq. feet)
Plus balconies, approx. 1.0 sq. metres (10.8 sq. feet)