



Cadogan Square, SW1X

£2,300 Per week

A well presented two bedroom split level apartment with direct lift access which has been finished to a high standard. The property benefits from natural light throughout.

Cadogan Square is arguably one of the best addresses in Chelsea within minutes of Sloane Square, Sloane Street and Kings Road. The property has access to the Communal Gardens which have tennis courts.

Features

- Two Bedrooms
- Two En-suites
- Direct Lift Access
- Split Level
- Access To Communal Gardens
- Eat In Kitchen



Cadogan Square, SW1X

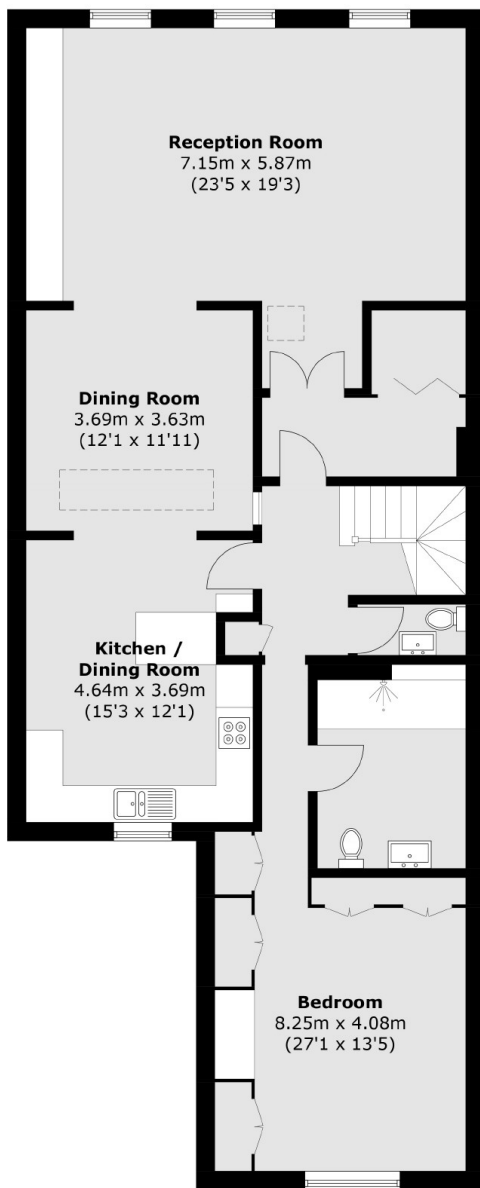
The property is entered on the fourth floor through direct lift access. This floor is where you find the open plan kitchen, reception room and dining area which have ample of space and natural light being west facing.

To the rear of the fourth floor is home to the master bedroom with an en suite and lots of built in storage along with the guest bathroom.

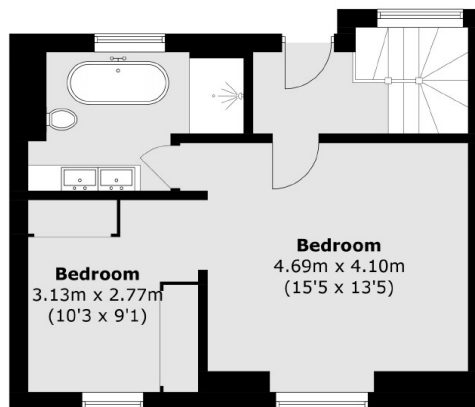
The second bedroom is spread over the whole of the fifth floor with its own en suite bathroom and walk in wardrobe. On this floor there are fantastic views of the city.



Cadogan Square, London, SW1X



Third Floor



Top Floor

Total area (approx.): 152.9 sq. m (1,646.1 sq. ft)