



Sprimont Place, SW3

£3,000,000

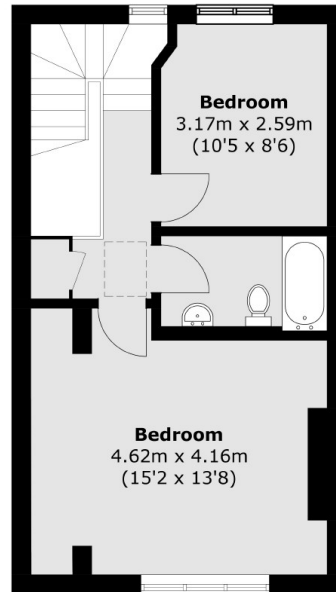
A stunning Grade II listed house just off Chelsea Green. This wonderful property has four bedrooms, top of the range appliances throughout and is flooded with natural light.

Sprimont Place runs one way from Sloane Avenue towards Chelsea Green. A number of delicatessens, restaurants, cafés and boutique shops are within walking distance.

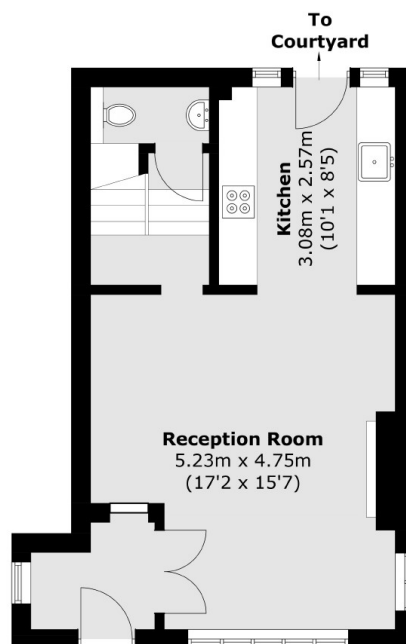
Features

- Grade II Listed
- Caretaker
- Excellent Condition
- Bespoke Joinery
- Underfloor Heating
- Communal Courtyard

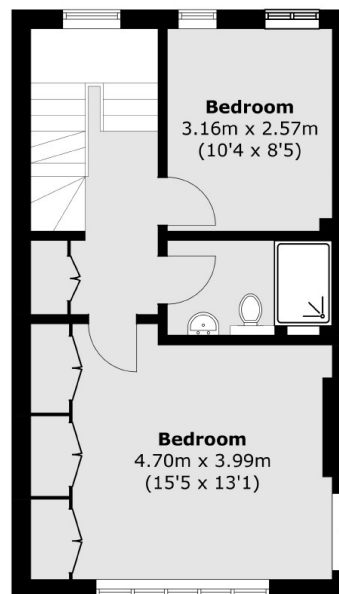
Sprimont Place, London, SW3



Second Floor



Ground Floor



First Floor

Total area (approx.): 121.7 sq. m (1,309.8 sq. ft)