



Ormonde Gate, SW3

£1,495,000

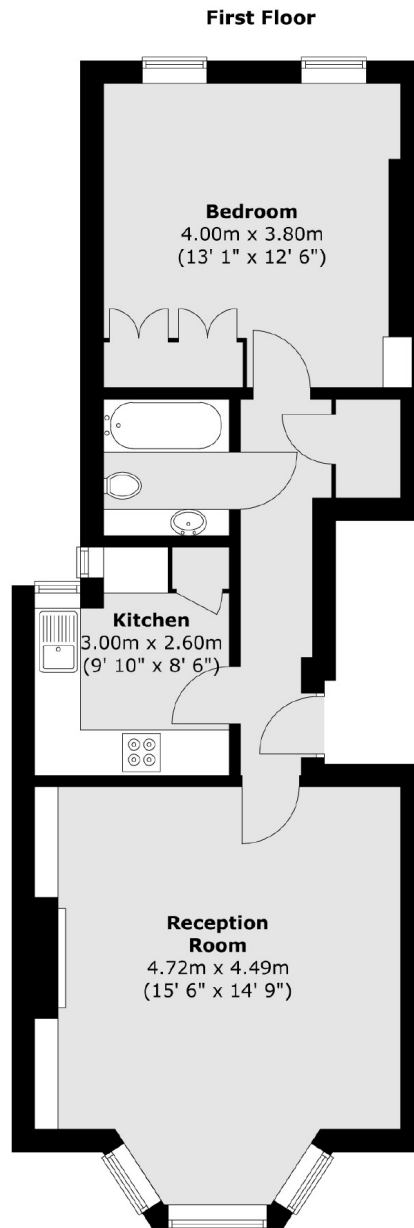
A charming first floor apartment with high ceilings and plenty of natural light. This property has a working fireplace, a balcony and the bonus of a residential caretaker.

Ormonde Gate is ideally located in a beautiful, quiet part of Chelsea. Burton Court, The Chelsea Physic Garden and Sloane Square tube station are all within walking distance.

Features

- Residential Caretaker
- First Floor
- High Ceilings
- Smart Communal Areas
- One Bedroom
- Long Leasehold

Ormonde Gate, London, SW3



Total area (approx.) : 57.4 sq. m (618 sq. ft)