



Ives Street, SW3

£1,615 Per week

Dexters



Ives Street, SW3

A superb family home with three bedrooms, three bathrooms and a contemporary kitchen with open plan dining room and three private roof terraces.

Entering into the property one is immediately greeted with a homely feel. The house is arranged over five floors and offers an abundance of space and natural light. Storage is integrated throughout the property to ensure the most is made out of the space.

On the first floor is a modern open plan kitchen and dining room with integrated appliances and a spacious reception room with patio doors leading out onto the private roof terrace. The master suite is located on the second floor and has a dressing room and en suite bathroom.

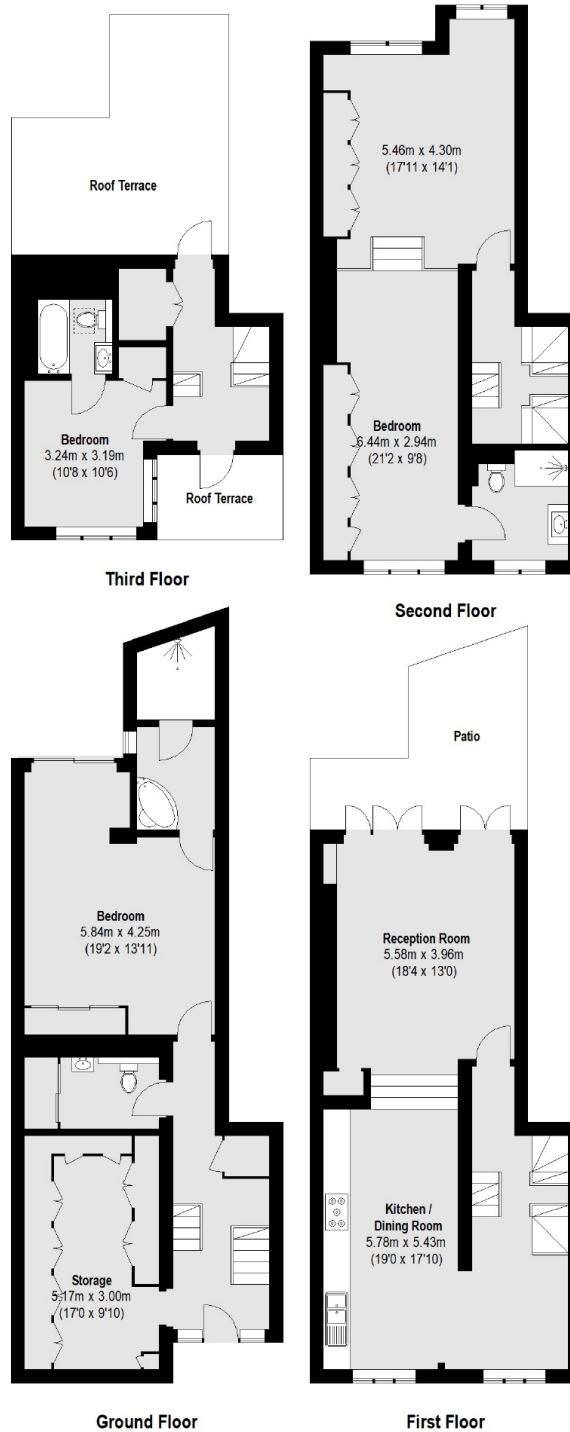
There are two further double bedrooms both with en suite bathrooms and built in wardrobes and a further private roof terrace off the bedroom on the third floor.

Features
A charming residential street just off Sloane Avenue in the heart of Chelsea between Kings Road and Fulham Road. Short walk to South Kensington and

- Three Bedrooms
- Walk-In Wardrobe
- Three Private Terraces
- Three Bathrooms
- Wooden Flooring
- Modern Family Home



Ives Street, London, SW3



Total area (approx.): 202.85 sq. m (2183 sq. ft.)
Roof Terrace: 26.21 sq. m (282 sq. ft.)
Patio: 14.38 sq. m (158 sq. ft.)