



## Franklins Row, SW3

£1,038 Per week

A two double bedroom apartment to let in a prestigious portered block in the heart of Chelsea overlooking Burton Court. The property has been finished to a very high standard making it the perfect property for a professional couple or sharers looking to live the high life in Chelsea.

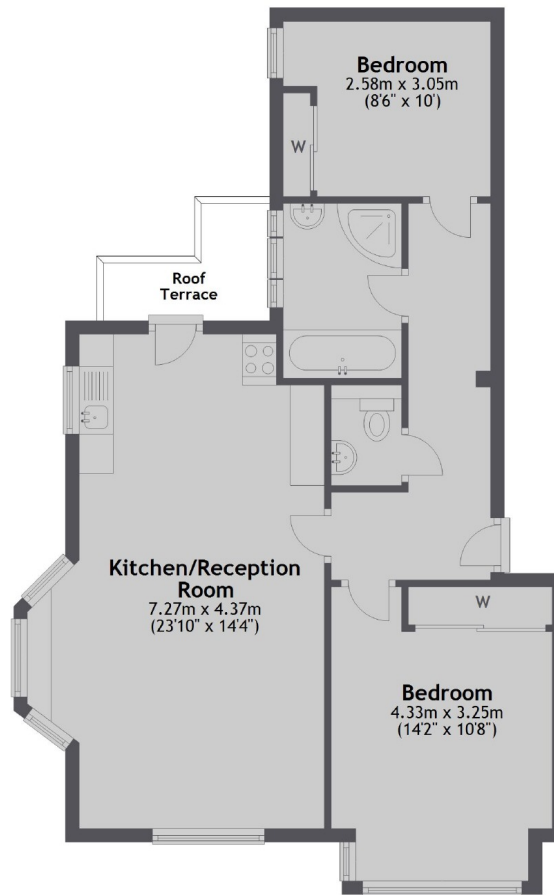
Burton Court is located just moments from the shops and restaurants of Kings Road, Sloane Street and Duke of York Square. The property is moments away from Sloane Square Underground.

### Features

- Two Double Bedrooms
- One Bathroom
- Immaculate Refurbishment
- Ground Floor
- Onsite Porter
- Quality Fixtures and Fittings

# Franklins Row, London, SW3

## Ground Floor



Total area: approx. 62.7 sq. metres (675.4 sq. feet)