



Sloane Avenue, SW3

£525,000

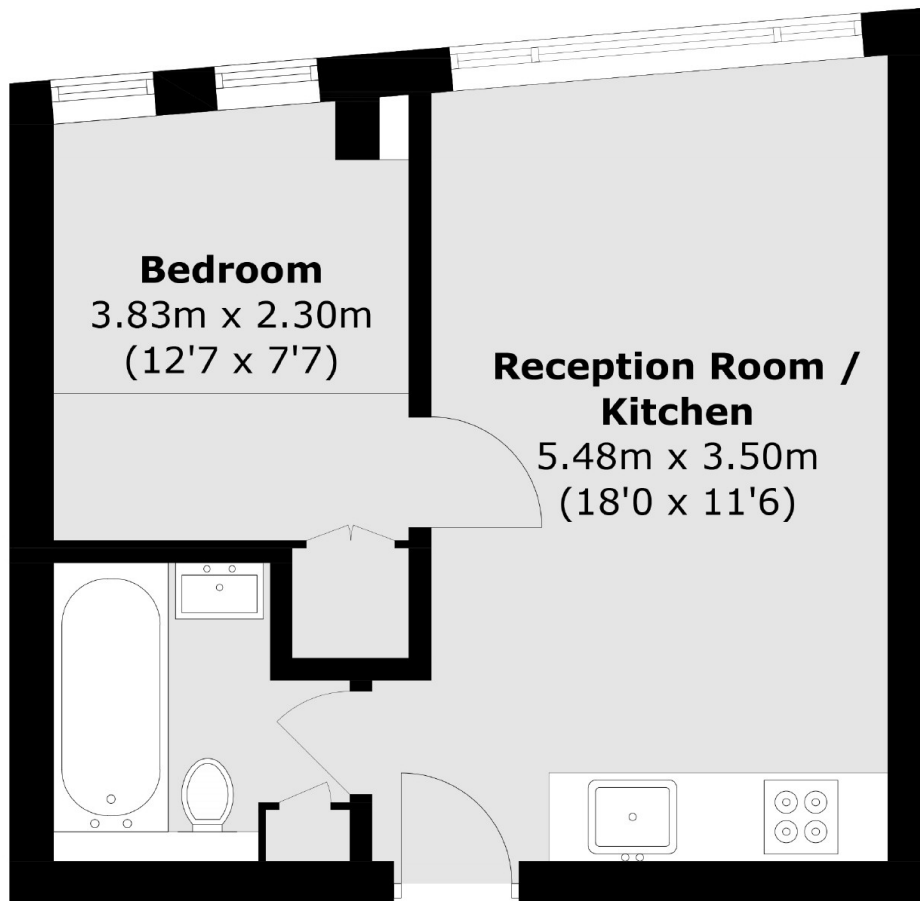
A stunning one bedroom apartment that has been finished to a very high standard. This property would work excellently as a rental investment or London base.

Nell Gwynn House is a popular, portered block located on Sloane Avenue which is in close proximity to Sloane Square, South Kensington and the King's Road.

Features

- 24 Hour Porter
- Recently Refurbished
- One Bedroom
- Lift
- One Bathroom
- Ideal Rental Investment

**Sloane Avenue,
London, SW3**



Sixth Floor

Total area (approx.): 29.8 sq. m (320.8 sq. ft)

Dexters

Chelsea and Belgravia
45 Sloane Avenue
London
SW3 3DH
Sales
020 7590 9510

Energy Rating: C. We aim to make our particulars both accurate and reliable. However they are not guaranteed; nor do they form part of an offer or contract. If you require clarification on any points then please contact us, especially if you're traveling some distance to view. Please note that appliances and heating systems have not been tested and therefore no warranties can be given as to their good working order.

 **RICS** | Regulated
Estate Agent
and Letting Agent

[dexters.co.uk](https://www.dexters.co.uk)