



Rosemoor Street, SW3

£650 Per week

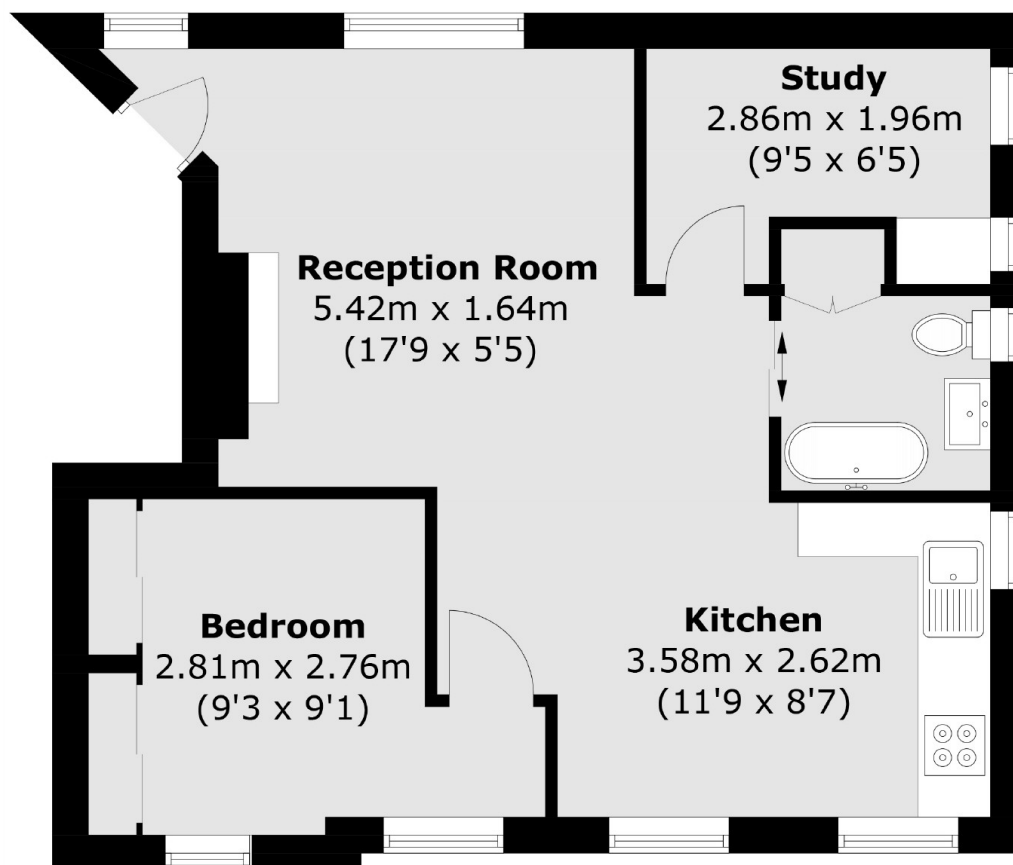
A furnished two bedroom flat on the second floor of an apartment block on a quiet street, ideally located moments from Sloane Square station.

Just off the fashionable Kings Road with easy access to the underground and bus routes at Sloane Square. Many trendy restaurants, cafes and shops are just a short walk away.

Features

- One Double Bedroom
- One Study
- Second Floor
- Newly Refurbished
- Natural Light
- Open Plan Living

Rosemoor Street, London, SW3



Total area (approx.): 44.8 sq. m (482.2 sq. ft)