



## Elystan Street, SW3

£576 Per week

An incredible one bedroom apartment to let in the heart of Chelsea Green, Sloane Square. The property has one double bedroom and an additional mezzanine sleeping area, perfect for guests or working from home.

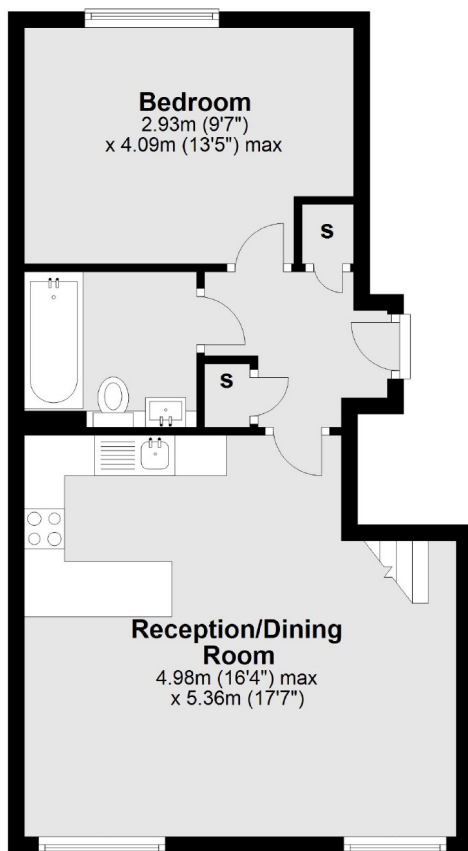
The property is located just off Kings Road with views down Markham Street. You will have very easy access to all local amenities including bars, restaurants, boutique stores, high street stores and supermarkets. This is such an exciting part of Chelsea to live in!

### Features

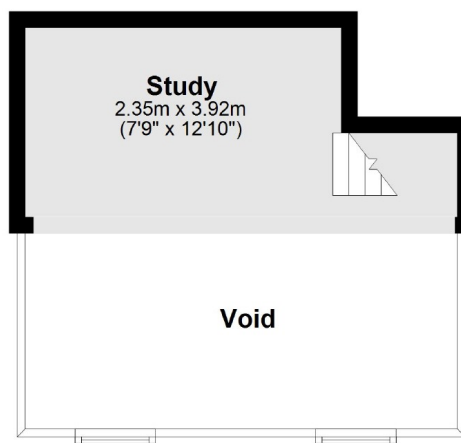
- Large One Bedroom
- Two Sleeping Areas
- Open Plan Kitchen
- Second Floor
- Wood Floors
- Wifi Included

# Elystan Street, London, SW3

## Second Floor



## Mezzanine



Total area: approx. 56.6 sq. metres (609.4 sq. feet)