



Gunter Grove, SW10

£2,795,000

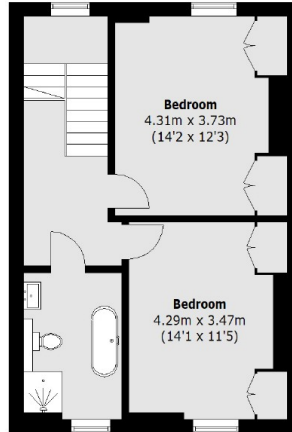
A completely refurbished house in Chelsea with off-street parking. This brilliant family home comprises of three bedrooms, excellent entertaining spaces and high ceilings.

Gunter Grove is ideally located between the Kings's Road and Fulham Road. Local transport links, restaurants, and 'The Beach' located on the Fulham Road are all within walking distance.

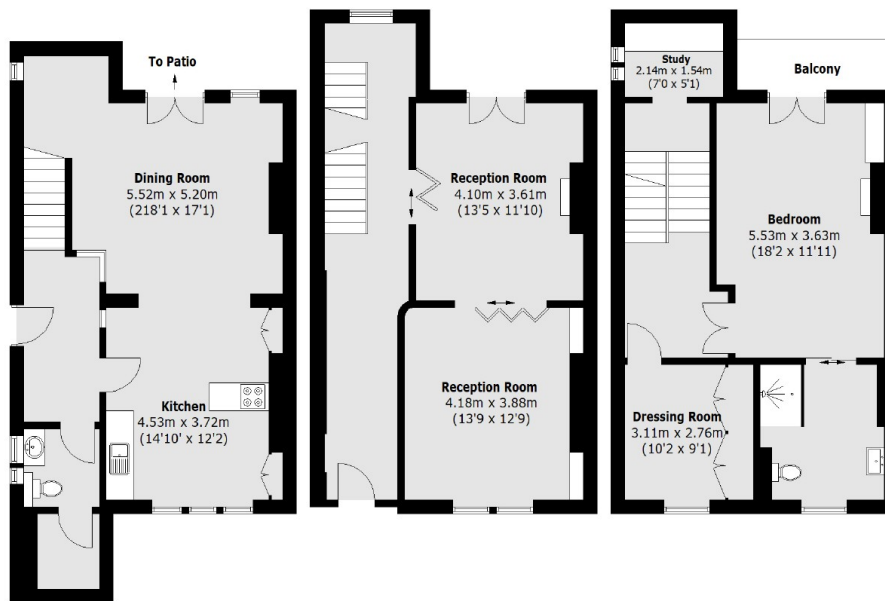
Features

- Freehold
- Off-Street Parking
- Three Bedrooms
- High Ceilings
- Recently Refurbished
- Semi-Detached

Gunter Grove, London, SW10



Second Floor



Lower Ground Floor

Ground Floor

First Floor

Total area (approx.): 210.7 sq. m (2,267.9 sq. ft)
Balcony area: 3.8 sq. m (40.9 sq. ft)