



Sloane Avenue, SW3

£576 Per week

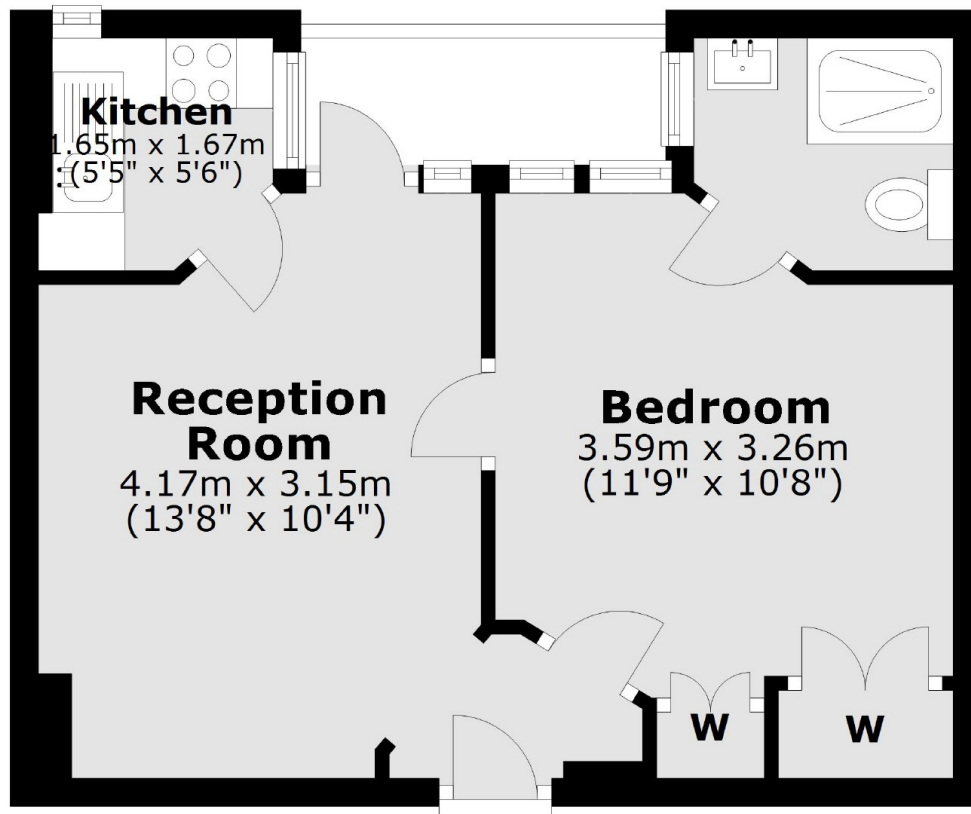
A one bedroom apartment in a portered mansion building with lift. Separate kitchen and a balcony accessed from the living room. Ideal for professional tenants or students wanting to be close to Sloane Square.

Sloane Avenue Mansions is ideally located between Kings Road and Brompton Road in the heart of Chelsea. Just moments from the shops and restaurants of Sloane Avenue and just five minute walk from South Kensington underground station.

Features

- Fifth Floor
- One Double Bedroom
- Balcony
- Separate Kitchen
- Lift Access
- On-Site Porter

**Sloane Avenue,
London, SW3**



Fifth Floor

Total area: approx. 31.0 sq. metres (333.6 sq. feet)