



Paultons Square, SW3

£1,846 Per week

This property has just undergone a twelve month refurbishment leaving no expense spared. The current owners have completely remodelled the flat to create three bedrooms and three bathrooms with spectacular fixtures and fittings.

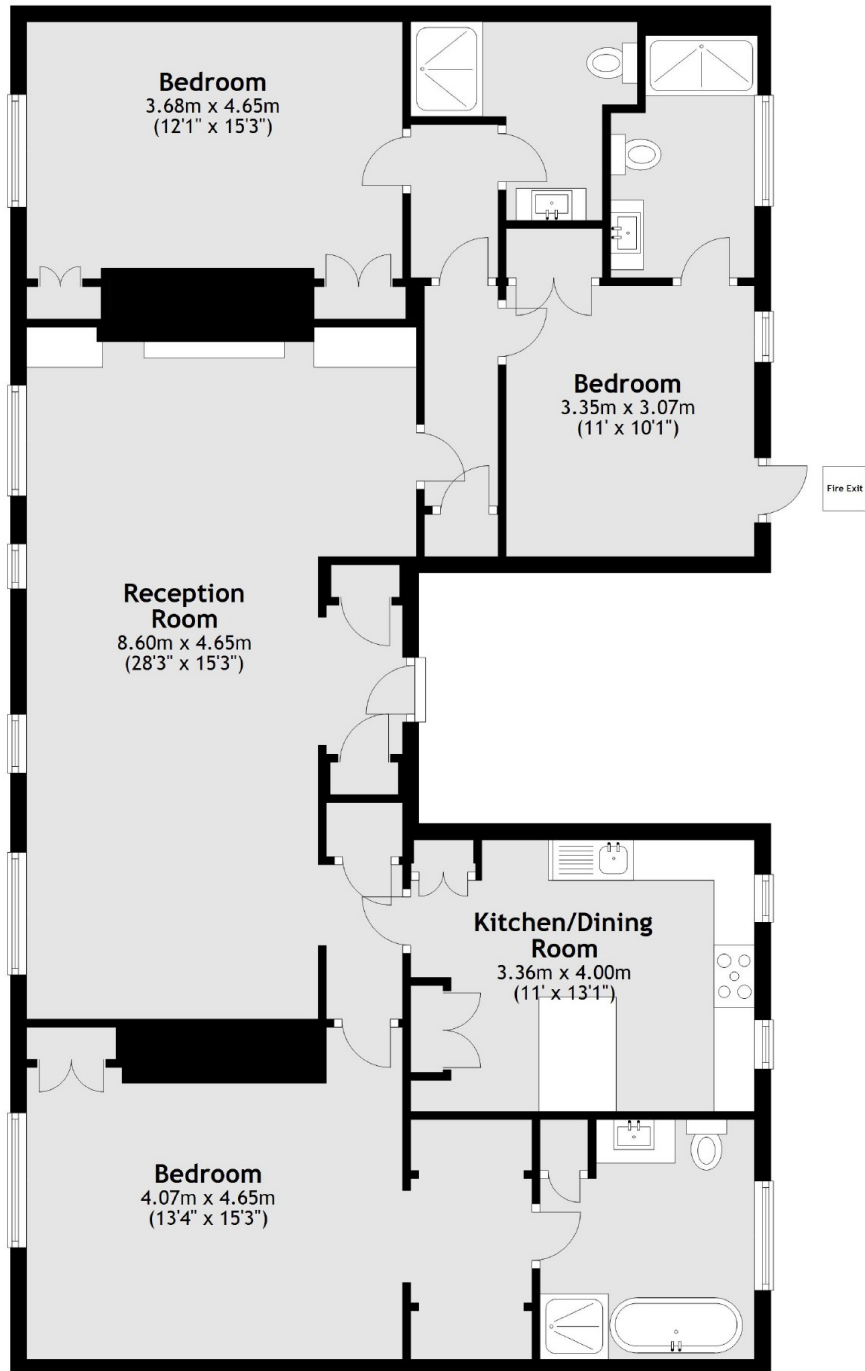
Paultons Square is one Chelsea's most desirable garden squares located off Kings Road and within easy walking distance of Battersea Park and Sloane Square.

Features

- Brand Newly Refurbished
- Three Bedrooms
- Three Bathrooms
- Separate Kitchen
- Air Conditioning Throughout
- Lift

Paultons Square, London, SW3

Fifth Floor



Total area: approx. 131.3 sq. metres (1413.4 sq. feet)