



## Royal Avenue, SW3

£1,350,000

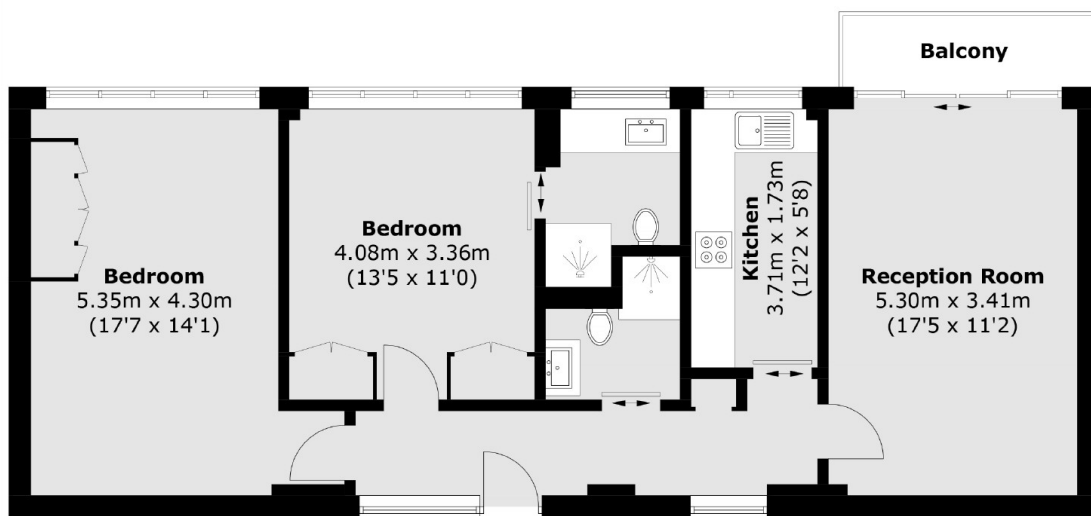
A top floor apartment (with lift) in excellent condition. This property has two double bedrooms, a balcony and has recently been refurbished by the current owners.

Royal Avenue House is located on the King's Road and has the bonus of a live-in caretaker. Pavilion Road, Chelsea Green and Sloane Square are all within walking distance.

### Features

- Lift
- Caretaker
- Two Bedrooms
- Long Lease
- Excellent Condition
- Balcony

# Royal Avenue, London, SW3



## Fourth Floor

Total area (approx.): 76.5 sq. m (823.4 sq. ft)  
Balcony: 3.4 sq. m (36.6 sq. ft)