



## Beaufort Street, SW3

£807 Per week

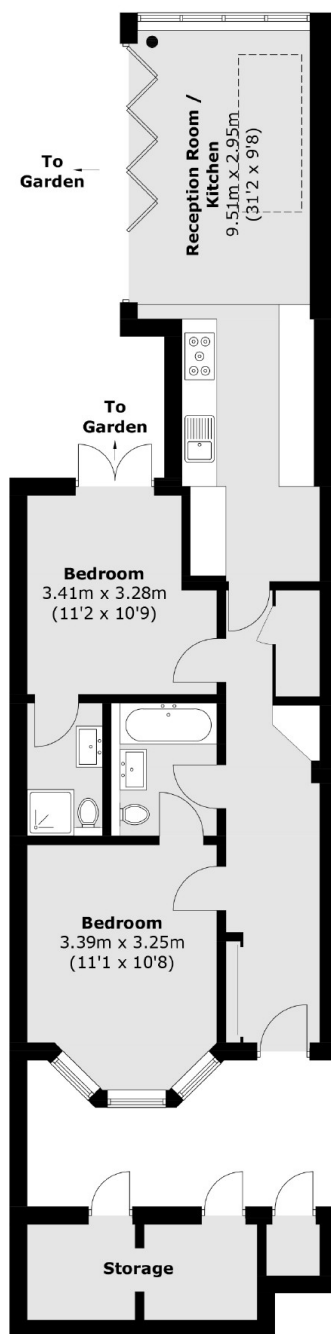
A contemporary two double bedroom, two bathroom flat in a period conversion with private entrance and private two tier garden in the heart of Chelsea. Ideal for tenants wanting outside space and great living space

The flat is located in the Fulham Beach area of Chelsea with a wide choice of shops, restaurants, bars and supermarkets on Fulham and Kings Road.

### Features

- Two bedrooms
- Two bathrooms
- Private Garden
- Under Floor Heating
- Open Plan Kitchen
- Private Entrance

# Beaufort Street, London, SW3



## Lower Ground Floor

Total area (approx.): 71.0 sq. m (764.2 sq. ft)  
Storage: 7.6 sq. m (81.8 sq. ft)