



Oakley Street, SW3

£646 Per week

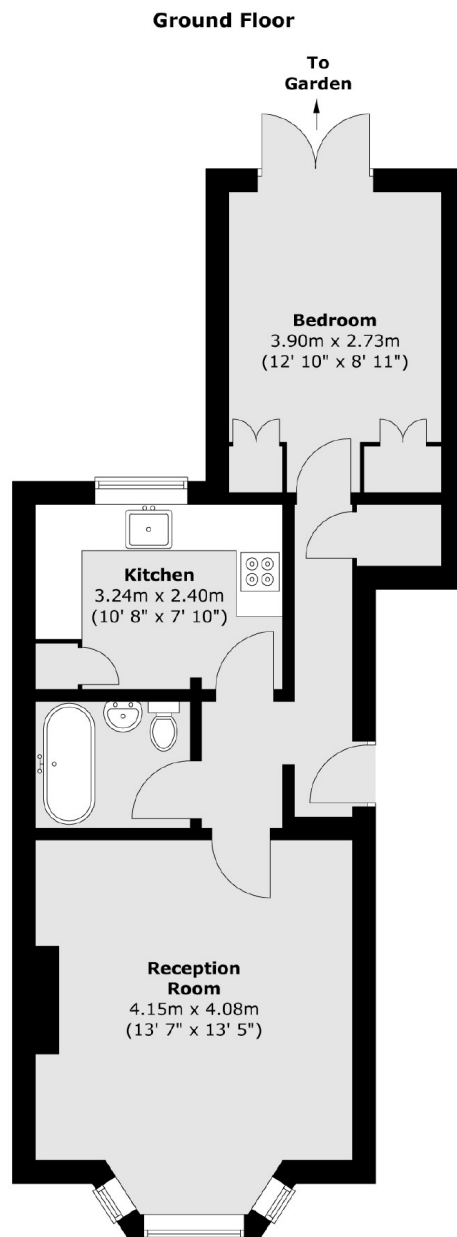
A spacious one bedroom flat to let on Oakley Street with its own private patio garden. The flat benefits from lots of natural light, period features including high ceilings and great storage in the bedroom.

Oakley Street is situated between King's Road and Chelsea Embankment close to restaurants like The Cross Keys, The Ivy and No. Fifty Cheyne and secluded pubs including The Phene.

Features

- One Bedroom
- One Bathroom
- Patio Garden
- Separate Kitchen
- Built in Storage
- High Ceilings

Oakley Street, London, SW3



Total area (approx.) : 48.7 sq. m (524 sq. ft)