



Gunter Grove, SW10

£519 Per week

A charming one bedroom flat situated on the raised ground floor in Chelsea. The property has high ceilings, plenty of natural light and a private terrace spanning just shy of 200sqft.

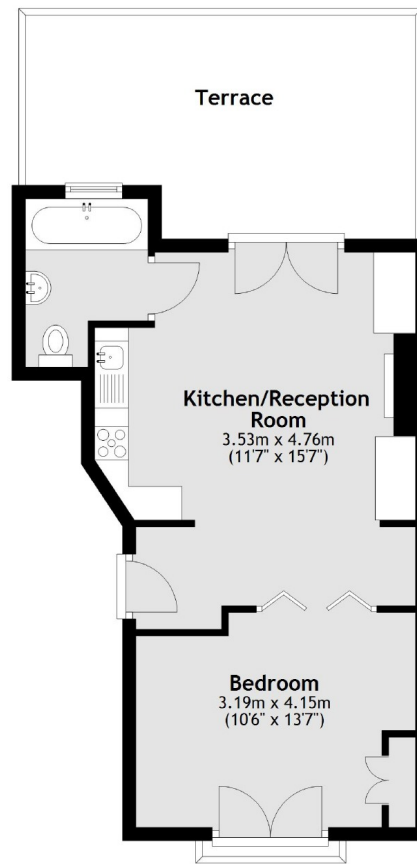
Gunter Grove is ideally located between the Kings's Road and Fulham Road. Local transport links, restaurants, and 'The Beach' located on the Fulham Road are all within walking distance.

Features

- One Bedroom
- Large Terrace
- Open Plan Kitchen
- Wood Floors Throughout
- High Ceilings
- Original Features

Gunter Grove, London, SW10

Raised Ground Floor



Main area: Approx. 40.8 sq. metres (439.3 sq. feet)
Plus roof terrace, approx. 18.3 sq. metres (196.8 sq. feet)