



St. Catherines Mews, SW3

£2,400,000

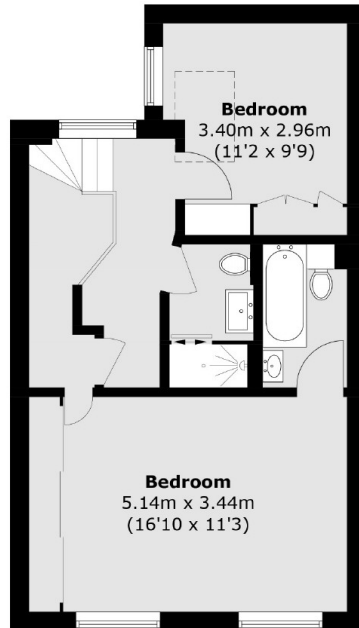
A brilliant mews house moments away from Sloane Square and Pavilion Road. This property has three bedrooms, a large reception room and a west-facing terrace.

St. Catherines Mews is conveniently located within easy reach of all the shops and amenities of Sloane Square, Walton Street and Pavilion Road.

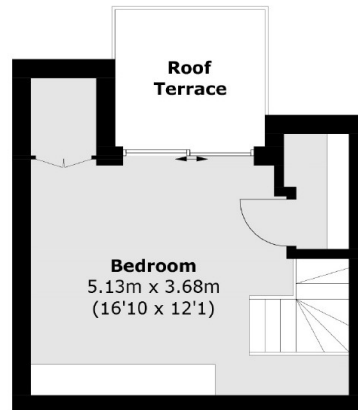
Features

- Freehold
- Gated Mews
- Three Bedrooms
- Terrace
- Garage
- Large Reception Room

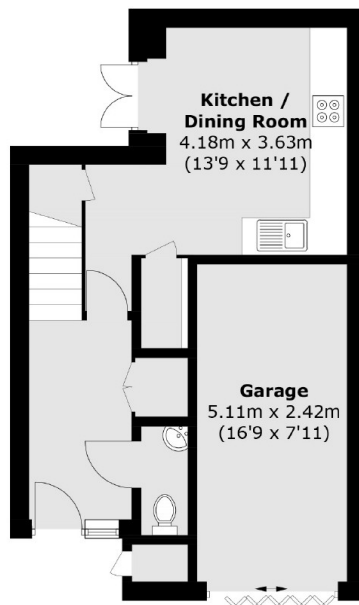
St. Catherines Mews, London, SW3



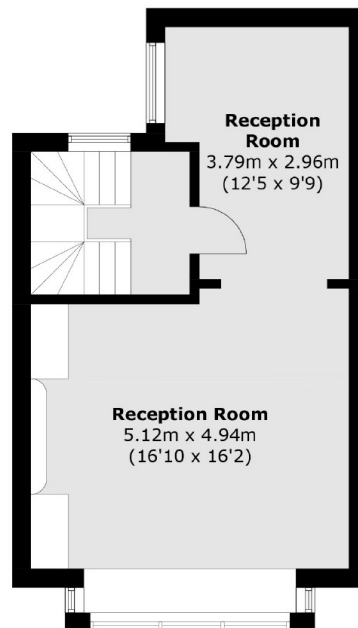
Second Floor



Third Floor



Ground Floor



First Floor

Total area (approx.): 132.0 sq. m (1,420.8 sq. ft)
Garage: 12.5 sq. m (134.5 sq. ft)