



Stadium Street, SW10

£2,375,000

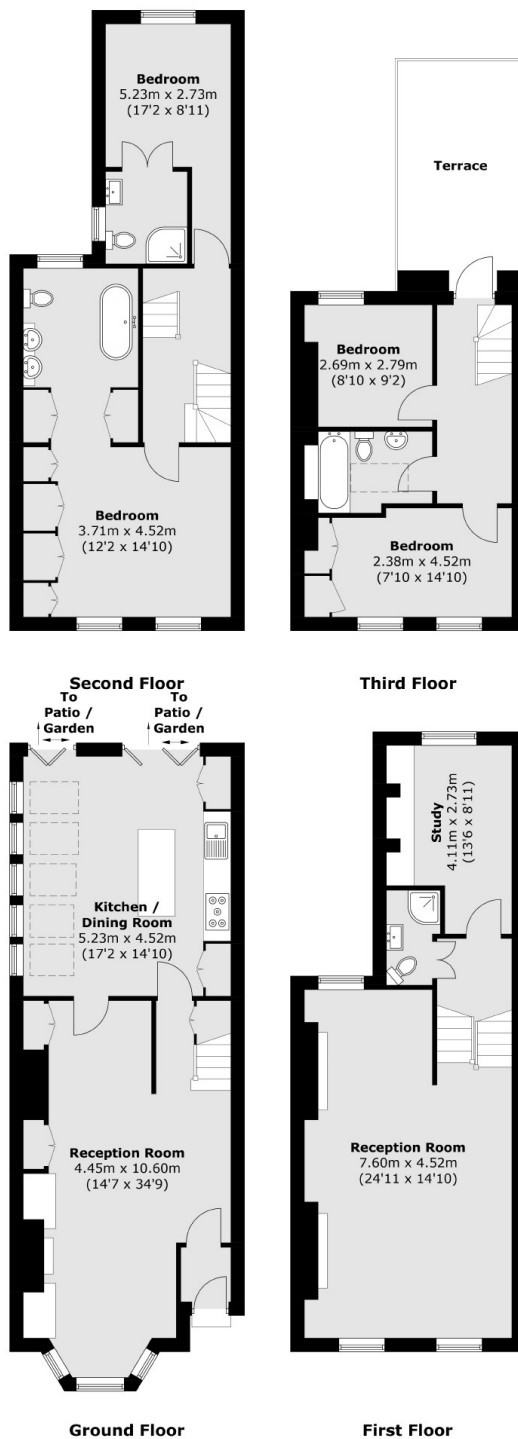
A wonderful family home that has been thoughtfully designed and refurbished by the current owners. This property has two reception rooms, four bedrooms, a large terrace and a garden.

Burnaby Street is located within the Lots Village Conservation Area in Chelsea. Westfield Park and the King's Road with all the amenities it has to offer are moments away.

Features

- Patio Garden & Terrace
- Two Reception Rooms
- Excellent Condition
- Four Bedrooms & Study
- Freehold
- Four Bathrooms

Stadium Street, London, SW10



Total area (approx.): 186.8 sq. m (2,009.7 sq. ft)
Terrace: 13.0 sq. m (139.9 sq. ft)

Dexters

Chelsea and Belgravia
45 Sloane Avenue
London
SW3 3DH
Sales
020 7590 9510

Energy Rating: D. We aim to make our particulars both accurate and reliable. However they are not guaranteed; nor do they form part of an offer or contract. If you require clarification on any points then please contact us, especially if you're traveling some distance to view. Please note that appliances and heating systems have not been tested and therefore no warranties can be given as to their good working order.

RICS Regulated
Estate Agent
and Letting Agent

dexters.co.uk