



**Stadium Street, SW10**

**£2,650,000**

**Dexters**



## Stadium Street, SW10

A wonderful family home that has been thoughtfully designed and refurbished by the current owners. This property has two reception rooms, four bedrooms, a large terrace and a garden.

Spread over four floors, this superb home has been cleverly redesigned to accommodate family living. On the ground floor is one of two reception rooms, a spacious kitchen and an immaculate patio garden. On the first floor is a home office that could easily be turned into a fifth bedroom and a large second reception room, ideal for entertaining.

On the second floor is the principle bedroom (en-suite) with plenty of storage and a further bedroom with it's own bathroom. At the top of the house are two more bedrooms, one bathroom and a stunning roof terrace, ideal for al fresco dining.

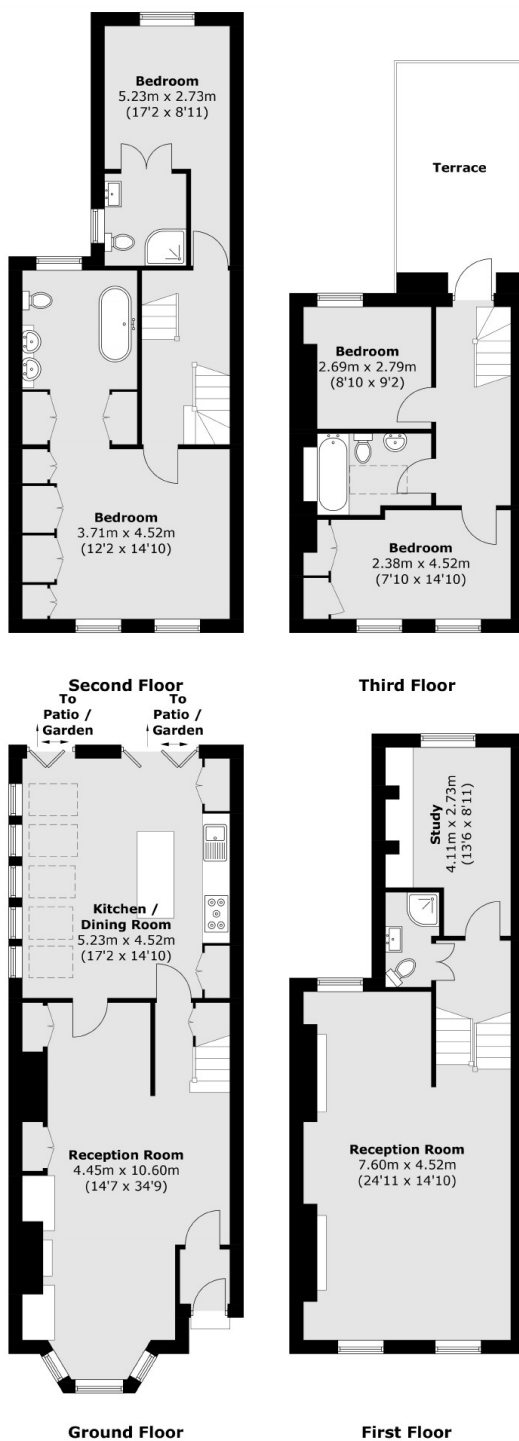
Burnaby Street is located within the Lots Village Conservation Area in Chelsea. Westfield Park and the King's Road with all the amenities it has to offer are moments away.

### Features

- Patio Garden & Terrace
- Two Reception Rooms
- Excellent Condition
- Four Bedrooms & Study
- Freehold
- Four Bathrooms



# Stadium Street, London, SW10



Total area (approx.): 186.8 sq. m (2,009.7 sq. ft)  
Terrace: 13.0 sq. m (139.9 sq. ft)